

## Desktop Apps



WD My Cloud

## Mobile Apps



WD My Cloud



WD Photos



<http://wd.com/wdmycloud/apps>



## Technical Support Services

<http://support.wd.com>  
<http://www.wd.com>

If you encounter problems with this product, please contact WD Technical Support.

### United States/North America

English	800.ASK.4WDC (800.275.4932)
Spanish	800.832.4778

### Asia Pacific

(toll free where available)

Asia Pacific (non toll free)	+65.6848.6008
Japan	00 531 650442/ 0120 994 120
Australia & New Zealand	+800.2275.4932

### Europe (toll free\*)

0800.27549338

\* Austria, Belgium, Denmark, France, Germany, Ireland, Italy, Netherlands, Norway, Spain, Sweden, Switzerland, United Kingdom

Europe (non toll free)	+31.880062100
Russia	8 10 8002 335 50110

### Middle East

0031.880062100

Western Digital, WD, and the WD logo are registered trademarks of Western Digital Technologies, Inc. in the U.S. and other countries; and WD My Cloud is a trademark of Western Digital Technologies, Inc. in the U.S. and other countries. Other marks may be mentioned here in that belong to other companies. Specifications subject to change without notice.

© 2013 Western Digital Technologies, Inc. All rights reserved.

Western Digital  
3355 Michelson Drive, Suite 100  
Irvine, California, U.S.A. 92612

4079-705118-801 Jul 2013



# My Cloud™

## Personal Cloud Storage



## Quick Installation Guide

\* WD My Cloud und das Wireless-Gerät müssen über Wi-Fi mit demselben Netzwerk verbunden sein.

\* Le WD My Cloud et le périphérique sans fil doivent être connectés en Wi-Fi au même réseau.

\* WD My Cloud e il dispositivo wireless devono essere connessi via Wi-Fi alla stessa rete.

\* WD My Cloud y el dispositivo inalámbrico deben tener una conexión Wi-Fi a la misma red.

\* WD My Cloud en het draadloze apparaat moeten via Wi-Fi verbonden zijn met hetzelfde netwerk.

\* WD My Cloud oraz urządzenie bezprzewodowe muszą być połączone z siecią za pomocą Wi-Fi.

\* O WD My Cloud e o dispositivo sem fio devem estar conectados por Wi-Fi à mesma rede.

\* WD My Cloud og trådløs enhed skal have oprettet Wi-Fi-forbindelse til det samme netværk.

\* WD My Cloudin ja langattoman laitteen on oltava Wi-Fi-yhteydessä samaan verkkoon.

\* WD My Cloud og den trådløse enheten må være trådløst koblet til det samme lokalnettverket.

\* WD My Cloud och trådlös enhet måste vara Wi-Fi-anslutna till samma nätverk.

\* A WD My Cloud meghajtónak és a vezeték nélküli eszköznek ugyanarra a hálózatra kell csatlakoznia Wi-Fi kapcsolatok keresztül.

\* WD My Cloud ve kablosuz aygıtın, Wi-Fi üzerinden aynı ağa bağlı olması gerekir.

\* WD My Cloud a bezdrátové zařízení musí být připojeny ke stejné síti pomocí připojení Wi-Fi.

\* WD My Cloud a bezdrátové zariadenie musia byť pripojené do rovnakej siete pomocou pripojenia Wi-Fi.  
\* يجب توصيل WD My Cloud والجهاز اللاسلكي بشبكة Wi-Fi ذاتها.

\* Η μονάδα WD My Cloud και η ασύρματη συσκευή πρέπει να είναι συνδεδεμένες μέσω Wi-Fi στο ίδιο δίκτυο.

\* WD My Cloudおよびワイヤレス端末は、同一ネットワークにWi-Fi接続してください。

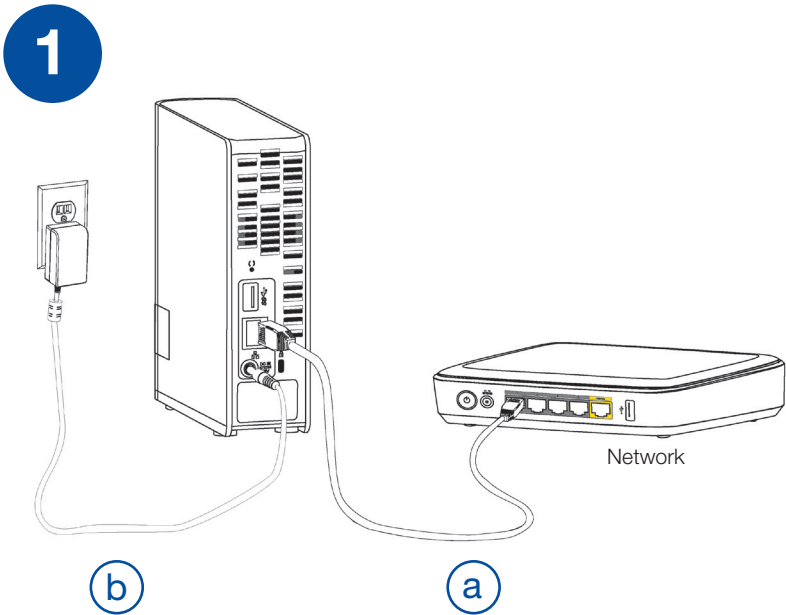
\* WD My Cloud 및 무선 장치는 같은 네트워크에 Wi-Fi로 연결되어 있어야 합니다.

\* WD My Cloud și dispozitivul fără fir trebuie să fie conectate prin Wi-Fi la aceeași rețea.

\* WD My Cloud и беспроводное устройство должны быть подключены по Wi-Fi к одной и той же сети.

\* WD My Cloud 和无线设备必须通过 Wi-Fi 连接到同一网络。

\* WD My Cloud 和無線裝置必須透過 Wi-Fi 連線至相同的網路。



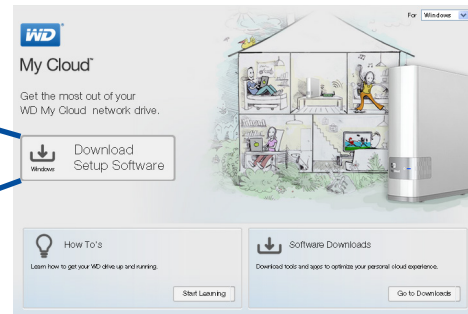
## Client Computers

2

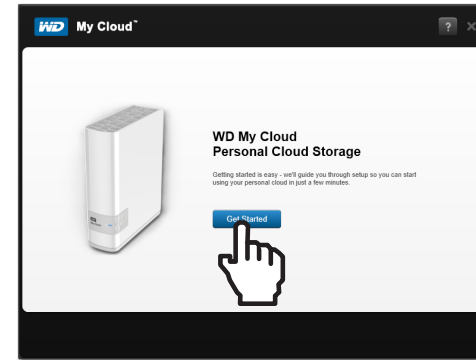


<http://wd.com/setup/wdmycloud>

3



4



OR

## Mobile Devices

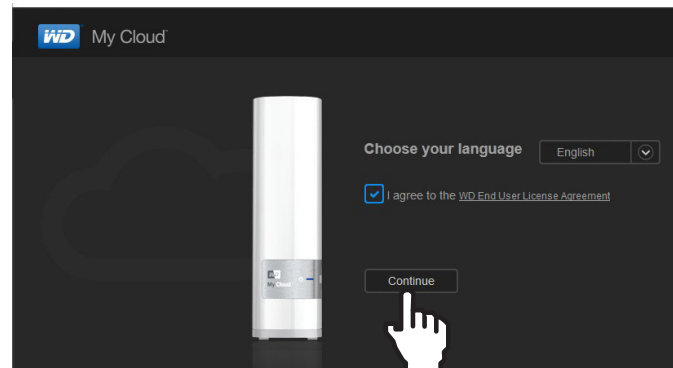
2



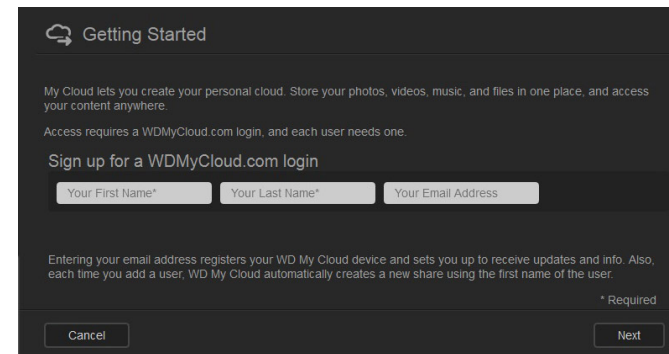
<http://wdmycloud>

<http://wdmycloud.local>

3



4



<http://products.wd.com/updates>

\* WD My Cloud and wireless device must be Wi-Fi® connected to the same network.