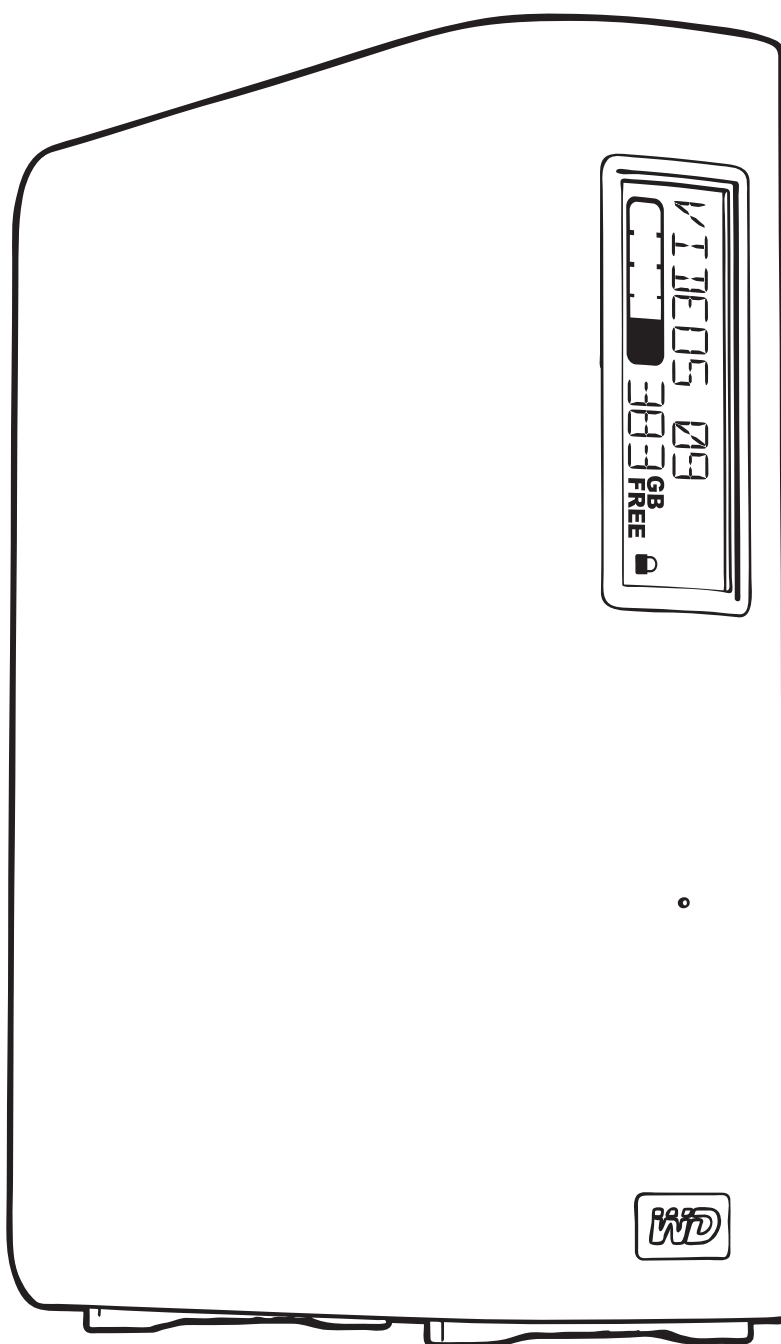


# My Book<sup>®</sup>

Studio<sup>™</sup> and Studio LX  
User Manual



## WD Service and Support

Should you encounter any problem, please give us an opportunity to address it before returning this product. Most technical support questions can be answered through our knowledge base or e-mail support service at [support.wdc.com](http://support.wdc.com). If the answer is not available or if you prefer, please contact WD at the best telephone number shown below.

Your product includes 30 days of free telephone support during the warranty period. This 30-day period starts on the date of your first telephone contact with WD technical support. E-mail support is free for the entire warranty period and our extensive knowledge base is available 24/7. To help us keep you informed of new features and services, remember to register your product online at <http://register.wdc.com>.

### Accessing Online Support

Visit our product support website at [support.wdc.com](http://support.wdc.com) and choose from these topics:

- **Downloads**—Download drivers, software, and updates for your WD product.
- **Registration**—Register your WD product to get the latest updates and special offers.
- **Warranty & RMA Services**—Get warranty, product replacement (RMA), RMA status, and data recovery information.
- **Knowledge Base**—Search by keyword, phrase, or answer ID.
- **Installation**—Get online installation help for your WD product or software.

### Contacting WD Technical Support

When contacting WD for support, have your WD product serial number, system hardware, and system software versions available.

North America		Asia Pacific	
English	800.ASK.4WDC (800.275.4932)	Australia	1 800 42 9861
Spanish	800.832.4778	China	800 820 6682/+65 62430496
		Hong Kong	+800 6008 6008
		India	1 800 11 9393 (MNTL)/1 800 200 5789 (Reliance) 011 26384700 (Pilot Line)
<b>Europe (toll free)*</b>	00800 ASK4 WDEU (00800 27549338)	Indonesia	+803 852 9439
		Japan	00 531 650442
		Korea	02 703 6550
<b>Europe</b>	+31 880062100	Malaysia	+800 6008 6008/1 800 88 1908/+65 62430496
<b>Middle East</b>	+31 880062100	Philippines	1 800 1441 0159
<b>Africa</b>	+31 880062100	Singapore	+800 6008 6008/+800 608 6008/+65 62430496
		Taiwan	+800 6008 6008/+65 62430496

\* Toll free number available in the following countries: Austria, Belgium, Denmark, France, Germany, Ireland, Italy, Netherlands, Norway, Spain, Sweden, Switzerland, United Kingdom.

# Table of Contents

WD Service and Support .....	ii
Accessing Online Support .....	ii
Contacting WD Technical Support.....	ii
<b>1 About Your WD Drive .....</b>	<b>1</b>
Features .....	1
Kit Contents .....	2
Optional Accessories .....	2
Operating System Compatibility.....	3
Disk Drive Format .....	3
Physical Description .....	3
Indicators .....	4
Power Button .....	5
Drive Interfaces.....	6
Kensington® Security Slot .....	6
Registering Your Drive .....	6
Handling Precautions .....	6
<b>2 Connecting the Drive and Getting Started .....</b>	<b>7</b>
Connecting the Drive .....	7
Getting Started with the WD SmartWare Software .....	10
WD SmartWare Software Overview .....	12
WD SmartWare Home Screen .....	13
Viewing the Info/Online Help Topics.....	14
Hiding the WD SmartWare Virtual CD .....	14
Showing the WD SmartWare Virtual CD.....	16
<b>3 Backing Up Your Computer Files .....</b>	<b>18</b>
About Backing Up Your Computer Files .....	18
Backing It All Up.....	20
Advanced Backup Capabilities.....	21
Selecting Specific Content to Back Up .....	21
Changing the Backup Software Settings.....	23
<b>4 Retrieving Backed Up Files .....</b>	<b>26</b>
About Retrieving Files.....	26
Retrieving a File .....	26
Retrieving a Folder .....	29
Retrieving an Earlier Version of a File or Deleted Files .....	29
Retrieving All Your Content .....	29

<b>5</b>	<b>Locking and Unlocking Your Drive</b>	<b>30</b>
	Password Protecting Your Drive	30
	Unlocking Your Drive	31
	Unlocking Your Drive with the WD SmartWare Software	32
	Unlocking Your Drive Without the WD SmartWare Software	32
	Turning Off the Drive Lock Feature	33
	Changing Your Password	33
<b>6</b>	<b>Managing and Customizing Your Drive</b>	<b>34</b>
	Using the WD SmartWare Icon	34
	Opening the WD SmartWare Software	34
	Dismounting the Virtual CD	36
	Safely Dismounting the Drive	36
	Using the WD SmartWare Icon	36
	Using the My Book Icon	37
	Using the Drive Power Button	37
	Displaying the Drive Serial Number and Status	37
	Unlocking the Drive Manually	38
	When the WD SmartWare Software Is Not Available	38
	When Your Computer Exits Sleep Mode	39
	Customizing Your Software Settings	39
	Specifying a Different Retrieve Folder	40
	Setting the Preferences Options	41
	Customizing Your Drive Settings	41
	Specifying a Name for Your Drive	42
	Registering Your Drive	43
	Setting the Drive Sleep Timer	44
	Erasing Your Drive	44
	Showing or Hiding the Virtual CD Icon	45
	Uninstalling the WD SmartWare Software	46
<b>7</b>	<b>Checking Drive Health</b>	<b>47</b>
<b>8</b>	<b>Using the Drive with Windows</b>	<b>49</b>
	Reformatting the Drive	49
	Installing the Drive on Windows Computers	49
	Installing on Windows XP Computers	50
	Installing on Windows Vista or Windows 7 Computers	52
	Getting Started with the WD SmartWare Software on Windows	54
	Using the WD SmartWare Icon	57
	Opening the WD SmartWare Software	57
	Checking Drive Status and Temperature	58
	Monitoring Icon Alerts	58
	Disconnecting the Drive Safely	58
	Enabling the Backup and Retrieve Functions	59

Uninstalling the WD SmartWare Software .....	59
Uninstalling on Windows XP Computers .....	59
Uninstalling on Windows Vista or Windows 7 Computers .....	59
Getting Started Without the WD SmartWare Software .....	60
<b>9 Troubleshooting .....</b>	<b>61</b>
Installing, Partitioning, and Formatting the Drive .....	61
Frequently Asked Questions .....	61
<b>A Installing an SES Driver .....</b>	<b>63</b>
Installing on Windows XP Computers .....	63
Installing the Driver Automatically .....	63
Installing the Driver Manually .....	65
Installing on Windows Vista Computers .....	67
Installing the Driver Automatically .....	67
Installing the Driver Manually .....	68
Installing on Windows 7 Computers .....	70
<b>B Compliance and Warranty Information .....</b>	<b>72</b>
Regulatory Compliance .....	72
FCC Class B Information .....	72
ICES/NMB-003 Compliance .....	72
Safety Compliance .....	72
CE Compliance For Europe .....	72
GS Mark (Germany only) .....	72
KCC Notice (Republic of Korea only) .....	73
Environmental Compliance (China) .....	73
Warranty Information .....	74
Obtaining Service .....	74
Limited Warranty .....	74
<b>Index .....</b>	<b>75</b>

## 1

## About Your WD Drive

Welcome to your My Book® Studio™ or Studio LX external hard drive. My Book Studio and Studio LX external drives are the high-performance answer to your storage needs with WD SmartWare software for automatic, continuous backup, an innovative e-label system to personalize your drive and easily archive media collections, and a blazing-fast FireWire 800 interface. Our latest editions feature visual, easy-to-use, automatic, continuous backup software and drive lock security protection.

This chapter includes the following topics:

- Features
- Kit Contents
- Optional Accessories
- Operating System Compatibility
- Disk Drive Format
- Physical Description
- Registering Your Drive
- Handling Precautions

### Features

Formatted for Mac computers, the My Book Studio and Studio LX external drives feature an innovative e-label system to personalize your drive and easily archive media collections, WD SmartWare software, and a fast FireWire 800 interface.

Major features of the My Book Studio and Studio LX drives include:

**Smaller, sleeker, more streamlined design**—We've made these award-winning drives even smaller, sleeker, and more elegant. As always, the book-like shape takes up less space on your desk and allows two or more My Book drives to nestle neatly together like volumes on a shelf.

**WD SmartWare™ software**—An easy-to-use backup solution that gives you the power to:

- Protect your data automatically—Relax! Your data is secure. Automatic, continuous backup will instantly make a second copy whenever you add or change a file.
- See your backup as it happens—Seeing is believing. Visual backup organizes and displays your content into categories and shows the progress of your backup.
- Bring back lost files effortlessly—Retrieve your valuable data to its original location whether you've lost all your data, deleted a file, or just overwritten an important file.
- Take control—Customize your backup, set drive security, run diagnostics, manage the power settings, and more from the WD SmartWare control center.
- Drive lock—Gain peace of mind knowing that your data is protected from unauthorized access or theft with password protection and 256-bit hardware-based encryption.

**Designed for Mac**—Formatted for Mac and compatible with Apple® TimeMachine™, these drives are plug-and-play ready for Mac computers.

**Smart display**—Create your own personalized drive label to show what is stored on each drive. You can even see the label when the drive is unplugged. The display also provides available capacity and security status information.

**Pure performance**—Save and access data at top speeds with the high-performance FireWire 800 interface. A USB 2.0 interface is also provided for maximum flexibility.

**Power miser**—My Book external drives are designed to save energy. WD GreenPower Technology™ lowers internal drive power consumption by up to 30%, a sleep mode reduces power during idle times, and a power-saving feature turns the drive off and on with your computer.

**Planet friendly**—We designed a small box from recycled materials to minimize waste. We encourage you to recycle it.

**Ready to plug-and-play with Mac computers**—Formatted for compatibility with all Mac OS X operating systems.

**Support for multiple devices**—One installation of the software supports up to three WD drives (My Book or My Passport drives with WD SmartWare software).

---

**Important:** For the latest WD product information and news, visit our website at [www.westerndigital.com](http://www.westerndigital.com). For the latest software, firmware, and product documentation and information, go to <http://products.wdc.com/updates>

---

## Kit Contents

As shown in Figure 1 on page 3, your My Book Studio or Studio LX disk drive kit includes the following:

- External hard drive
- USB cable
- FireWire 400 cable
- FireWire 800 cable
- AC adapter (configuration may vary depending on region)
- Quick Install Guide
- WD SmartWare software (included on the drive)

## Optional Accessories

For information about optional accessories for this product, visit:

USA	<a href="http://www.shopwd.com">www.shopwd.com</a> or <a href="http://www.wdstore.com">www.wdstore.com</a>
Canada	<a href="http://www.shopwd.ca">www.shopwd.ca</a> or <a href="http://www.wdstore.ca">www.wdstore.ca</a>
Europe	<a href="http://www.shopwd.eu">www.shopwd.eu</a> or <a href="http://www.wdstore.eu">www.wdstore.eu</a>
All others	Contact WD Technical Support in your region. For a list of Technical Support contacts, visit <a href="http://support.wdc.com">support.wdc.com</a> and see Knowledge Base Answer ID 1048.

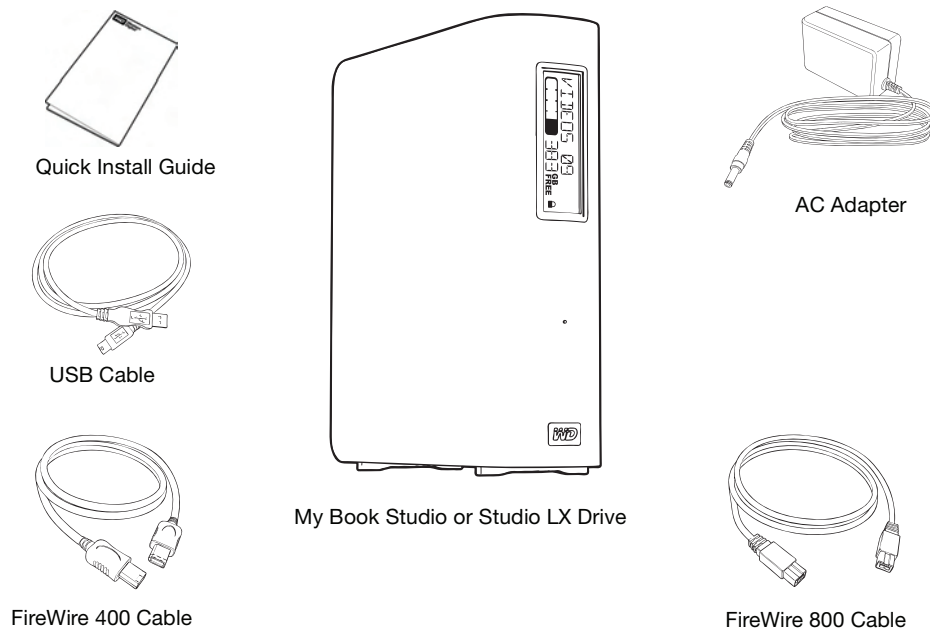


Figure 1. My Book Drive Kit Components

## Operating System Compatibility

Your My Book Studio or Studio LX disk drive and the WD SmartWare software are compatible with the following operating systems:

### Mac OS X®

- Mac OS X® Tiger®
- Mac OS X® Leopard®
- Mac OS X® Snow Leopard™

### Windows®

- Windows XP
- Windows Vista®
- Windows 7

*Note:* Compatibility can vary, depending on hardware configuration and operating system.

For highest performance and reliability, always install the latest software updates and service pack (SP). For Mac computers, go to the **Apple** menu and select **Software Update**. For Windows computers, go to the **Start** menu and select **Windows Update**.

## Disk Drive Format

Your My Book Studio or Studio LX drive is preformatted with a single HFS+J partition for Mac OS X operating systems. If you want to use this drive with a Windows system, see “Using the Drive with Windows” on page 49 and “Troubleshooting” on page 61.

## Physical Description

As shown in Figure 2 and Figure 3 on page 4, the My Book Studio and Studio LX drives have:

- Indicators on the front
- The power connector and button, interface ports, and a security slot on the back



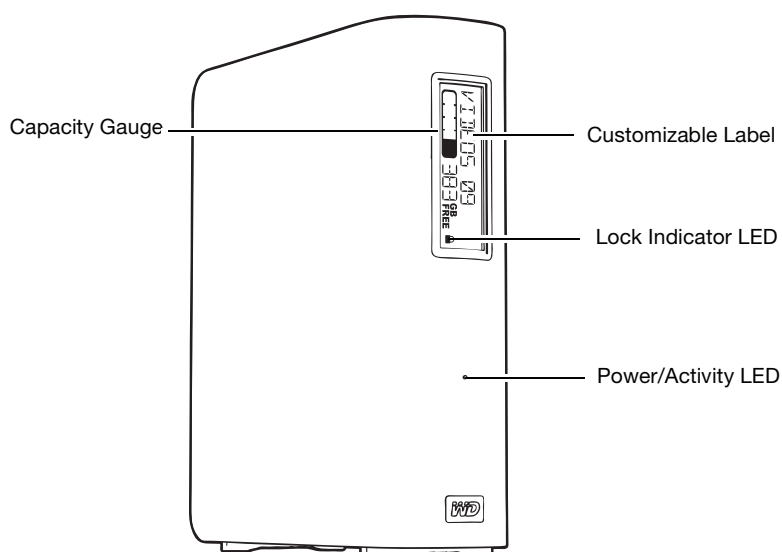


Figure 2. Front of My Book Studio and Studio LX Drive

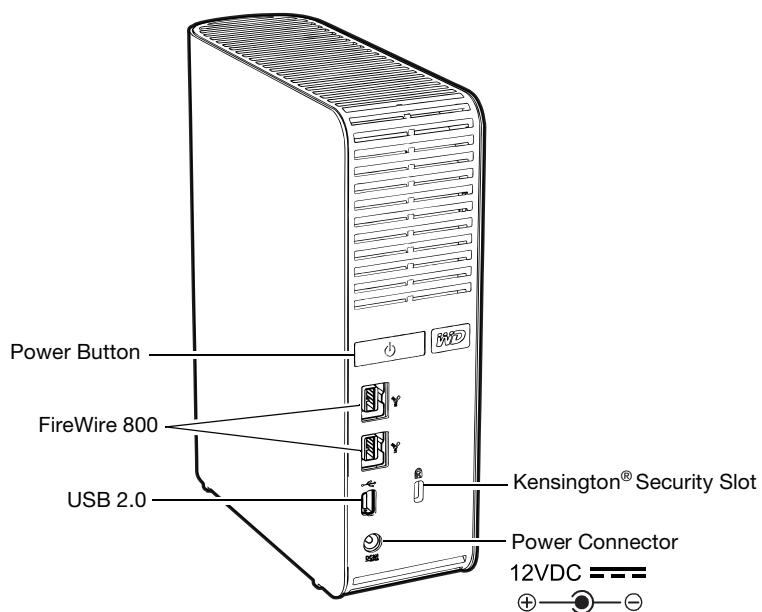


Figure 3. Back of My Book Studio and Studio LX Drive

## Indicators

My Book Studio and Studio LX drives have four indicators:

- Capacity gauge
- Customizable label
- Power/activity LED
- Lock indicator LED

**Capacity Gauge.** The capacity gauge has ten segments that fill from bottom to top (if the drive is vertical) or from right to left (if the drive is horizontal) to indicate space used on the drive during the power-on state. Each segment represents approximately 10 percent of drive capacity:



Segment Number	% Used	Segment Number	% Used
(<5% does not display)			
1	5-9	6	50-59
2	10-19	7	60-69
3	20-29	8	70-79
4	30-39	9	80-89
5	40-49	10	>90

The numerical display indicates the percentage of capacity available.

The capacity gauge only works if the WD SmartWare software is installed on your computer.

**Customizable Label.** The customizable label that you specify remains on the drive even when it is turned off or disconnected from your computer.

**Lock Indicator LED.** The lock indicator LED shows whether the drive is password protected. It is turned off only when you remove the password from the drive, or when the drive loses power.

**Power/Activity LED.** The power/activity LED indicates the drive's power state and activity as follows:

Appearance	Description
On steady	Idle
Fast flashing (approximately 3 times per second)	Activity
Slow flashing (approximately every 2.5 seconds)	System standby

## Power Button

The power button is used to safely power down the drive and avoid data loss or damage to the drive. The power button only works if the WD SmartWare software is installed on your computer.

*Note:* If you disconnect the drive after using the power button to turn it off, when you reconnect it to your running computer, the drive automatically powers on. If you leave the drive connected to your computer after using the power button to turn it off, you must press the power button again to turn it back on.

## Drive Interfaces

As shown in Figure 3 on page 4, My Book Studio and Studio LX drives have three interface ports:

- Two FireWire 800 ports
- One USB 2.0 port

**FireWire 800.** The FireWire 800 ports support data transfer rates of up to 800 Mb/s and are backward-compatible with FireWire 400 using the included FireWire 400 cable. Connection to a FireWire 400 device transfers data at FireWire 400 speed (up to 400 Mb/s).

**Hi-Speed USB (USB 2.0).** The USB 2.0 port supports data transfer rates of up to 480 Mb/s. USB 2.0 is backward-compatible with USB 1.1. Connection to a USB 1.1 port transfers data at USB 1.1 speed (up to 12 Mb/s).

## Kensington® Security Slot

For drive security, the Kensington security slot accepts a standard Kensington security cable (sold separately). For more information on the Kensington security slot and available products, visit [www.kensington.com](http://www.kensington.com).

## Registering Your Drive

Always register your My Book Studio or Studio LX drive to get the latest updates and special offers. You can easily register your drive using WD SmartWare software, as described in “Registering Your Drive” on page 43. Another way is to register online at <http://register.wdc.com>.

## Handling Precautions

WD products are precision instruments and must be handled with care during unpacking and installation. Drives may be damaged by rough handling, shock, or vibration. Observe the following precautions when unpacking and installing your external storage product:

- Do not drop or jolt the drive.
- Do not move the drive during activity.
- Do not use this product as a portable drive.
- To allow proper ventilation, do not block any of the enclosure’s air slots.

## 2

## Connecting the Drive and Getting Started

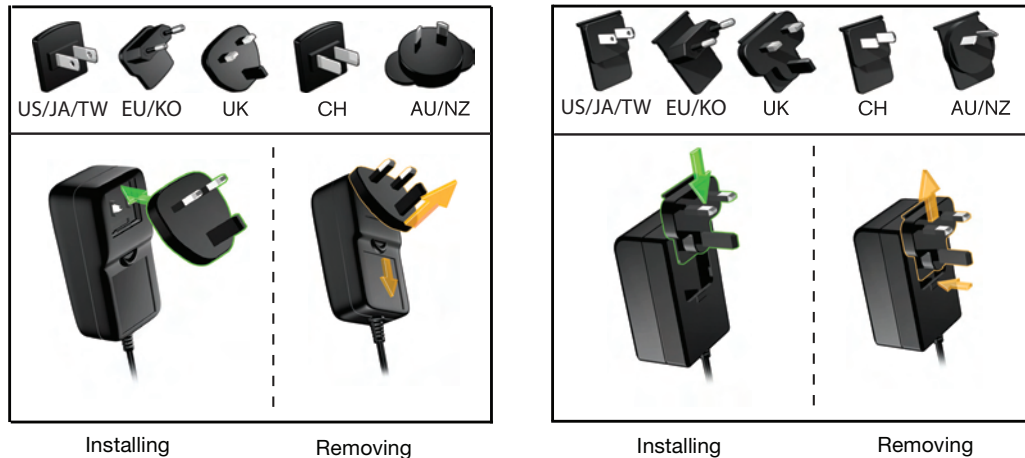
This chapter provides step-by-step instructions for connecting the drive and installing the WD SmartWare software on your computer. It includes the following topics:

[Connecting the Drive](#)  
[Getting Started with the WD SmartWare Software](#)  
[WD SmartWare Software Overview](#)  
[WD SmartWare Home Screen](#)  
[Viewing the Info/Online Help Topics](#)  
[Hiding the WD SmartWare Virtual CD](#)  
[Showing the WD SmartWare Virtual CD](#)

### Connecting the Drive

To connect your My Book Studio or Studio LX drive to your Mac OS X Tiger/Leopard/Snow Leopard computer:

1. Depending on your region, if required, change the power adapter as follows:



2. Turn on your computer.
3. Connect the My Book drive as shown in Figure 4 on page 8.
4. If you have reformatted the drive for use on a Windows computer, skip the rest of this procedure and see “Using the Drive with Windows” on page 49 or “Troubleshooting” on page 61 instead.

*Note:* WD SmartWare software is provided in the form of a virtual CD (VCD) drive on your My Book drive. The VCD displays on your desktop and behaves just like a physical CD.

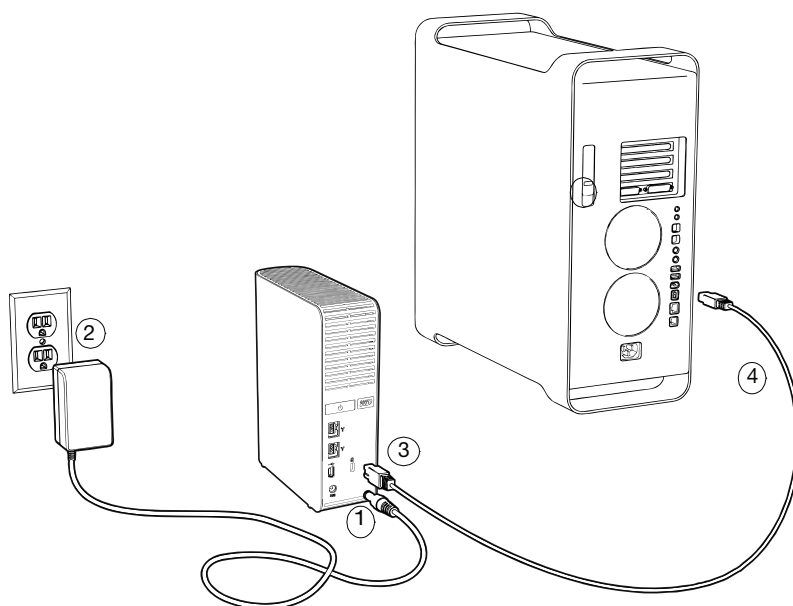


Figure 4. Connecting the My Book Drive

5. After you physically connect the drive as shown in Figure 4, the WD SmartWare virtual CD icon:

- Displays on the desktop:



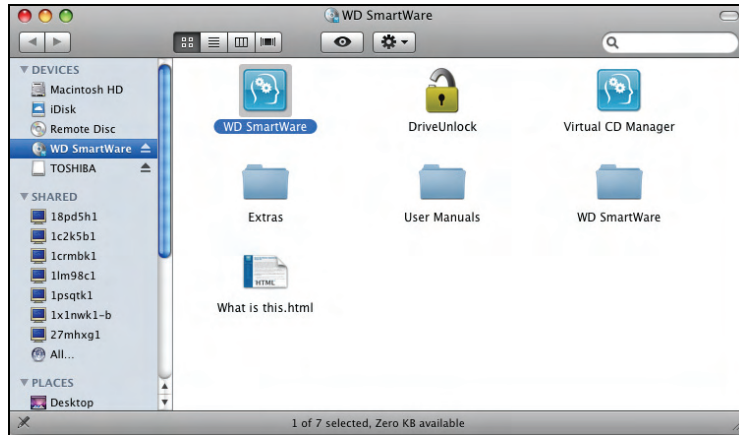
- Is listed under **Devices** in Finder:



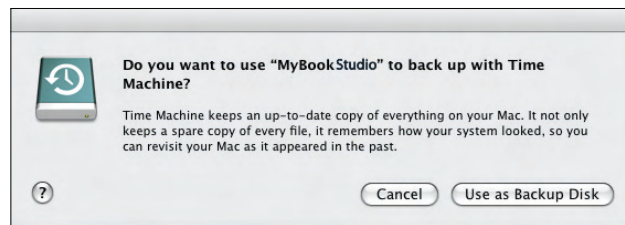
The My Book icon also displays on the desktop:



6. Double-click the WD SmartWare virtual CD, and then double-click the WD SmartWare icon on the VCD file listing:



*Note: Mac OS X Leopard and Snow Leopard only:* A message asks whether you want to use the My Book drive to back up with Time Machine:



WD SmartWare software is fully compatible with Apple's Time Machine software. When using Time Machine, WD SmartWare software can still be used for password protecting the drive, registering the drive, and running diagnostics.

- a. If you *do not* want to use the Time Machine backup software, click **Cancel**.
- b. If you *do* want to use the Time Machine backup software, click **Use as Backup Disk**. The My Book icon now displays as:



7. The Welcome to WD SmartWare screen displays:



If a flash video player is installed on your computer, the screen is animated.

8. Continue to “Getting Started with the WD SmartWare Software” in the next section.

## Getting Started with the WD SmartWare Software

After you select either **Back Up Files**, **Set Up Drive**, or **Retrieve a backup**, the software guides you through a simple two-step WD SmartWare software installation process. If a newer version of software is available, the system will automatically alert you. WD highly recommends using the latest version of software, especially on a new installation.

After the installation is complete, the WD SmartWare software will either:

- Guide you through:
  - Backing up your files (see Figure 5 on page 11 and “Backing Up Your Computer Files” on page 18)
  - Setting up your drive security (see Figure 6 on page 11 and “Password Protecting Your Drive” on page 30)
- Display the Home screen (see Figure 7 on page 12 and “WD SmartWare Software Overview” on page 12)

*Note:* The initial Backup and Drive Settings screens only appear one time—the first time you install the WD SmartWare software on your computer. After that, launching the software displays the Home screen so you can choose what you want to do.

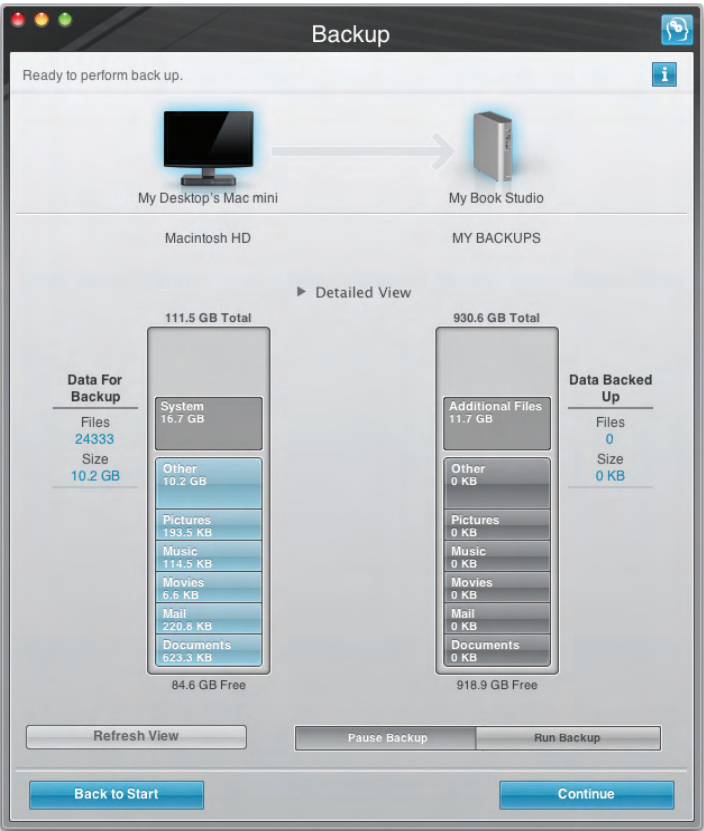


Figure 5. Initial Backup Screen



Figure 6. Initial Drive Settings Screen



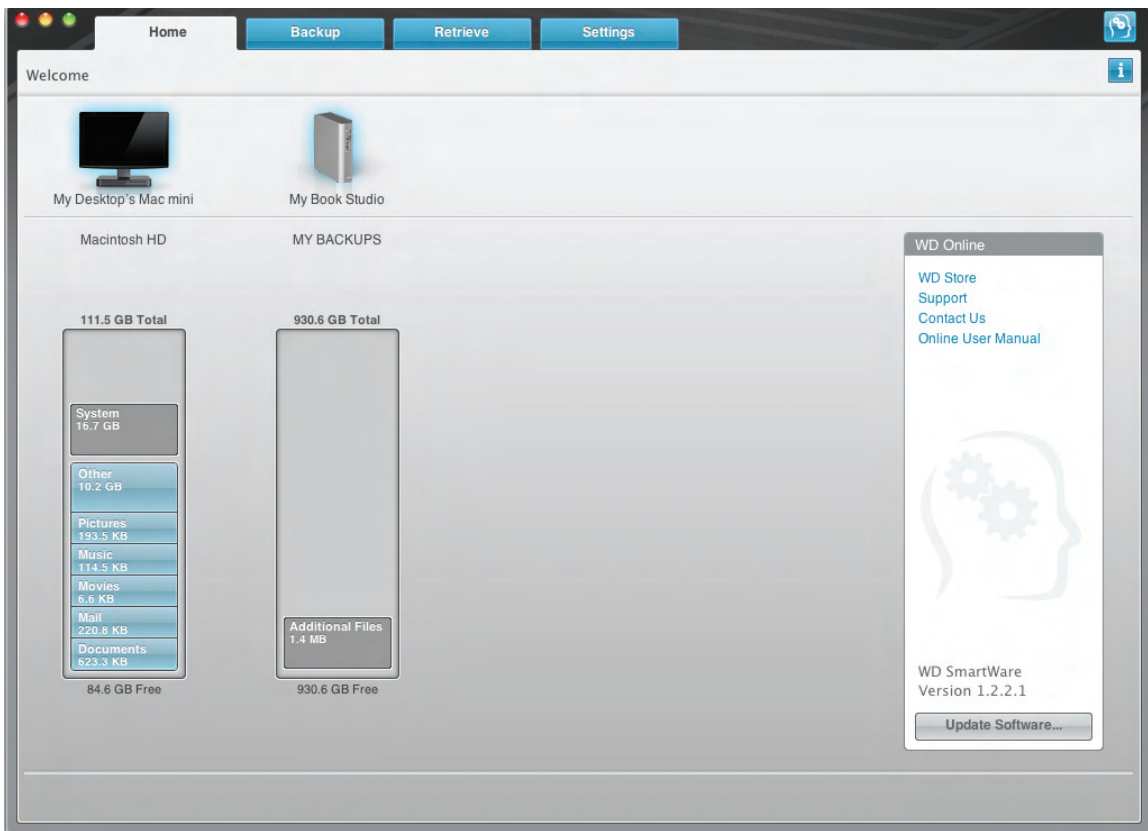


Figure 7. Home Screen

## WD SmartWare Software Overview

WD SmartWare software is an easy-to-use tool that gives you the power to:

- Secure your drive—In drive settings, create a password to protect your encrypted drive from unauthorized access or data theft.
- Protect your data automatically—Automatic, continuous backup instantly makes a copy whenever you add or change a file.  
*Note:* Automatic backup protection is continuous for as long as your My Book drive is connected to your computer. Then, whenever you disconnect and reconnect the drive to your computer, the WD SmartWare software rescans your computer for new or changed files and resumes automatic, continuous backup as before.
- See your backup as it happens—Seeing is believing. Visual backup organizes and displays your content into categories and shows the progress of your backup.
- Retrieve lost files effortlessly—Bring back your valuable data to its original location whether you've lost all your data or just overwritten an important file.

## WD SmartWare Home Screen

The WD SmartWare Home screen (available after installation and the initial backup and security setup) provides four tab-selected options:

- **Home**—Provides a Content Gauge that shows the capacity and content of each hard drive in or connected to your computer (see Figure 7 on page 12)
- **Backup**—Manages existing backups or creates new backups of your important data, including movies, music, documents, e-mail, and pictures (see Figure 8 on page 19)
- **Retrieve**—Brings back valuable data that has been lost or overwritten (see Figure 11 on page 27)
- **Settings**—Manages security, diagnostics, power settings, and backup parameters (see Figure 9 on page 23)

On the Home screen, you can modify the primary drive being categorized with the drop-down selection box under the name of your computer. By selecting a different drive, the system will identify the categories of files on that drive. Then click the:

- **Backup** tab to back up files from the selected drive to your My Book drive
- **Retrieve** tab to retrieve backed up files from your My Book drive to any location on your computer

In the Content Gauge for your computer's hard drive, all of your files that are available for backup are shown against a blue background in categories that are based on the following folders on your computer:

- **Music**
- **Movies**
- **Pictures**
- **Mail**
- **Documents**
- **Other**

Each category includes all of the files in the represented folder except the **Other** category, which includes all of the files in all other folders on your computer.


Note that:

- The **System** category, shown against a dark gray background, includes all of your operating system files that are not available for backup. Files that are not backed up include system files, program files, applications, and working files.
- The **Retrieved** category, also shown against a dark gray background, shows the files that you have retrieved from a prior backup. They, too, are not available for backup.
- Hovering the cursor over a category displays the number of files in the category.

In the Content Gauge for your My Book drive, the **Additional Files** category includes all of the files shown in the used space portion of your drive properties. This space is not available for backups.

*Note:* The small number of files that are shown in the **Additional Files** category when you first install the WD SmartWare software—before performing your first backup—represents the system and hidden files that your computer's operating system put there when you installed the drive.

## Viewing the Info/Online Help Topics

Each WD SmartWare screen provides easy access to online help information to quickly guide you through your backup, retrieve, and settings tasks. Whenever you are uncertain about what to do, just click the info/online help icon  in the upper-right corner of any screen:



To close the info/help screen after reading the online help, click the red **X** button in the upper-left corner of the screen.

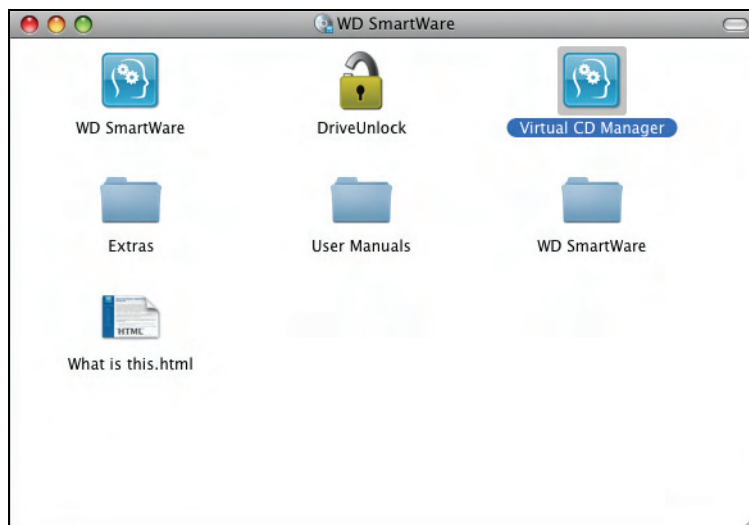
## Hiding the WD SmartWare Virtual CD

If you have decided to get started without installing the WD SmartWare software, you might also want to hide (disable) the WD SmartWare virtual CD (VCD). Doing this would be a simple two-click operation from the WD SmartWare Virtual CD Settings dialog (see “Showing or Hiding the Virtual CD Icon” on page 45). But if you have not installed the WD SmartWare software, it is more involved, and you should be aware of the following precautions:

- Hiding the VCD inhibits access to the WD SmartWare Virtual CD Manager utility that enables and disables the VCD. If you move the drive to another computer, the VCD remains hidden there too. If you want to show the VCD or install the WD SmartWare software on the other computer, you will need to either copy the utility back to the drive or download another copy of it.
- You cannot run the WD SmartWare Virtual CD Manager utility directly from the drive—you must run it from a folder on your desktop.

With those precautions in mind, if you have not installed the WD SmartWare software and want to hide the VCD:

1. Double-click the WD SmartWare icon to display the VCD file listing:



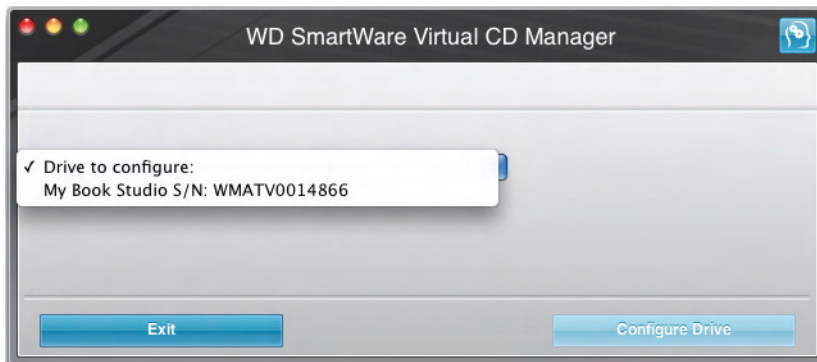
2. Use the copy/paste or drag/drop function to copy the Virtual CD Manager file from the VCD file listing to the desktop of your computer.

3. Double-click the Virtual CD Manager file on your desktop to display the WD SmartWare Virtual CD Manager utility screen:



4. Click **Continue**.
5. Read the license agreement and click **Accept** to continue.

The WD SmartWare Virtual CD Manager utility locates your drives and asks you to select the one you want to configure:



6. Select your My Book drive, and the WD SmartWare Virtual CD Manager utility displays its current and target VCD settings:



7. Click **Configure Drive** to continue and, as prompted, for your change to take effect, you must power cycle your My Book drive:
  - a. Disconnect the USB or FireWire cable from your drive.
  - b. Disconnect the AC power adapter cable from your drive.
  - c. Wait ten seconds.
  - d. Reconnect the AC power adapter cable to your drive.
  - e. Reconnect the USB or FireWire cable to your drive.

8. Click **Exit** to close the WD SmartWare Virtual CD Manager utility and check your desktop display to confirm the change.
9. If you think you might later want to move your My Book drive to another computer, show (enable) the VCD there, or install the WD SmartWare software, then use the copy/paste or drag/drop function to copy the Virtual CD Manager folder from your desktop to your My Book drive.

## Showing the WD SmartWare Virtual CD

If you got started without installing the WD SmartWare software, hid (disabled) the WD SmartWare virtual CD (VCD), and now want to move your My Book drive to another computer, or install the WD SmartWare software, you might want or need to show (enable) the VCD on the other computer. Doing this would be a simple two-click operation from the WD SmartWare Virtual CD Settings dialog (see “Showing or Hiding the Virtual CD Icon” on page 45). But if you have not installed the WD SmartWare software and have hidden the VCD, it is more involved.

If you have not installed the WD SmartWare software and want to show the VCD:

1. Use the copy/paste or drag/drop function to copy the Virtual CD Manager file from your My Book drive to the desktop of your computer. (This is the file that you copied to your My Book drive at step 9 of “Hiding the WD SmartWare Virtual CD.”)

If you did not copy the Virtual CD Manager folder to your My Book drive when you hid the VCD, then use your Internet connection to download the utility Virtual CD (VCD) Manager for Mac from [support.wdc.com](http://support.wdc.com).

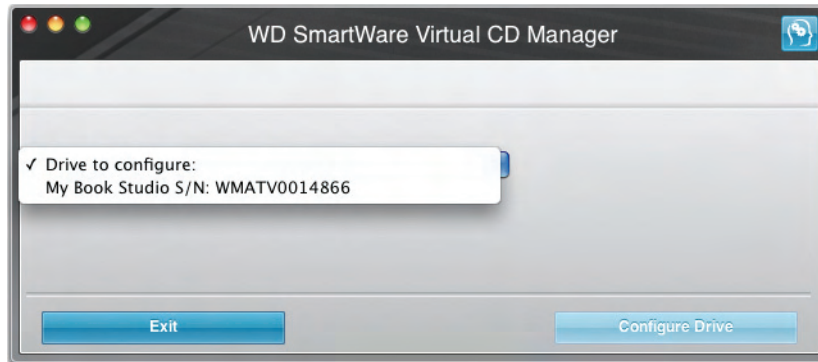
2. Open the Virtual CD Manager folder or the downloaded utility .zip file (Virtual\_CD\_Manager\_vxxxx.zip) and double-click the appropriate .exe file to display the WD SmartWare Virtual CD Manager screen:
  - Virtual\_CD\_Manager.exe from the Virtual CD Manager folder
  - Virtual\_CD\_Manager\_vxxxx.exe from the downloaded .zip file



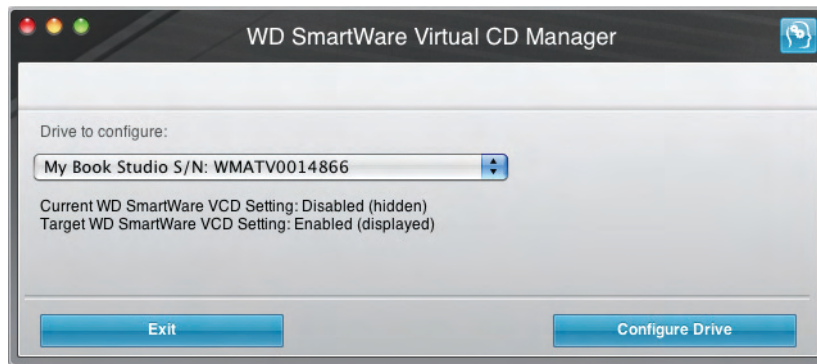
3. Click **Continue**.

4. Read the license agreement and click **Accept** to continue.

The WD SmartWare Virtual CD Manager utility locates your drives and asks you to select the one you want to configure:



5. Select your My Book drive, and the WD SmartWare Virtual CD Manager utility displays its current and target VCD settings:



6. Click **Configure Drive** to continue.
7. As prompted, for your change to take effect, you must power cycle your My Book drive:
  - a. Disconnect the USB or FireWire cable from your drive.
  - b. Disconnect the AC power adapter cable from your drive.
  - c. Wait ten seconds.
  - d. Reconnect the AC power adapter cable to your drive.
  - e. Reconnect the USB or FireWire cable to your drive.
8. Click **Exit** to close the WD SmartWare Virtual CD Manager utility.
9. Check your desktop display to confirm the change.



## 3

## Backing Up Your Computer Files

This chapter includes the following topics:

- [About Backing Up Your Computer Files](#)
- [Backing It All Up](#)
- [Advanced Backup Capabilities](#)

### About Backing Up Your Computer Files

The WD SmartWare software automatically and continuously backs up all of the content (music, movies, photos, documents, e-mail, and other files) on your computer to your My Book drive. After the WD SmartWare software categorizes the different types of content you have, simply clicking the **Run Backup** button will back all of them up. Advanced users can select specific types of content to back up.

After performing a backup, the WD SmartWare software protects your files by backing up any:

- New file that you create or copy to your hard drive
- Existing file that you change in any way

This protection is automatic—the WD SmartWare software does it for you without any action on your part—just make sure to leave your My Book drive connected to your computer.

*Note:* Automatic backup protection is continuous for as long as your My Book drive is connected to your computer. Then, whenever you disconnect and reconnect the drive to your computer, the WD SmartWare software rescans your computer for new or changed files and resumes automatic, continuous backup as before.

Additionally, the Backup screen (see Figure 8 on page 19) provides:

- Content Gauges for your computer's disk drives, so you can see the number of files and the storage size for each content category
- A **Refresh View** button for rescanning the drive and verifying accurate Content Gauge counts after adding or changing files on your computer
- A **Detailed View** content box that you can use to select specific categories of files or folders to back up, with an **Apply Changes** button for implementing your selections
- **Run Backup** and **Pause Backup** buttons for starting and pausing backups

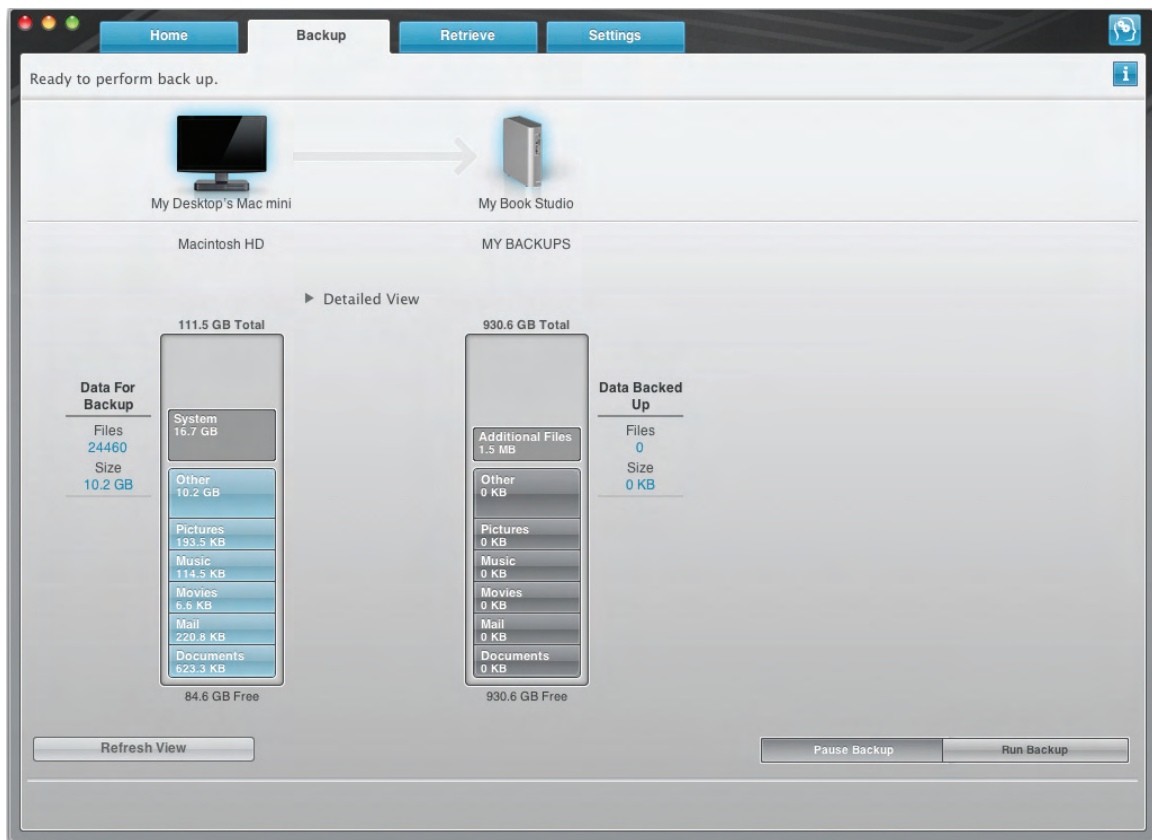


Figure 8. Backup Screen

In the Content Gauges for your computer's disk drives, the categories of files that would be included in the backup if you click **Run Backup** are shown:

- Light blue background in the Content Gauge for your computer's hard drive represents the original files that are available for backup.
- Gray background in the Content Gauge for your My Book drive represents the potential backup copies of the original files.
- Dark blue background identifies categories of files that have been backed up

In the Content Gauge for your My Book drive, the **Additional Files** category includes all of the files shown in the used space portion of your drive properties. This space is not available for backups.

In the Content Gauges and the **Detailed View** content box, the file categories are based on the following folders on your computer:

- **Music**
- **Movies**
- **Pictures**
- **Mail**
- **Documents**
- **Other**

Each category includes all of the files in the represented folder except the **Other** category, which includes all of the files in all other folders on your computer.



Note that:

- The **System** category, shown against a dark gray background, includes all of your operating system files that are not available for backup. Files that are not backed up include system files, program files, applications, and working files.
- The **Retrieved** category, also shown against a dark gray background, shows the files that you have retrieved from a prior backup. They, too, are not available for backup.
- Hovering the pointer over a category displays the number of files in the category.

To back up other hard drives, click the **Home** tab and select the other drive from the drop-down menu.

## Backing It All Up

To back up all of your computer files:

1. Click the **Backup** tab to display the Backup screen (see Figure 8 on page 19).
2. Click **Run Backup** to back up all of your files.
3. During the backup:
  - The Backup screen displays a progress bar and a message indicating the amount of data that has been backed up.
  - The blue background in the Content Gauge for your computer's hard drive changes to yellow/amber for all of the files that have not yet been backed up.
  - The gray background in the Content Gauge for your My Book drive changes to blue for each category as the backup completes.
  - You can continue to set up your drive or perform any other functions—the WD SmartWare software will back up all of your files in the background.
  - A **Pause Backup** button is available to pause the backup.
4. Appearance of a backup successfully finished message means that the backup completed normally.

If any files could not be backed up, their representations remain yellow/amber in the Content Gauge for your computer's hard drive and the WD SmartWare software displays a:

- Caution message indicating the number of files involved
- **View** link that you can click to see a list of the files and the reasons they were not backed up

Some applications and running processes can keep files from being backed up. If you cannot determine why some of your files were not backed up, try:

- a. Saving and closing all of your open files.
- b. Closing all running applications—including your e-mail program and web browser.

**Important:** Appearance of a Caution message indicating that your drive is full means that there is not enough free space on the drive to complete the backup.

The best long-term solution would be to relegate the drive to long-term archive storage and:

- a. Click the **Home** tab to display the Home screen.
- b. Click the **WDStore** link in the WD Online box to view the Western Digital Online Store website.
- c. Click **External Hard Drives** and select the best drive to suit your future requirements.

5. If you clicked **Pause Backup** at step 3, the **Stop backup?** confirmation prompt reminds you that the WD SmartWare software runs your backup job in the background, so you can continue using your computer for other things during the backup.

To continue, click either:

- **Continue Backup** to disregard your pause request and resume the backup
- **Stop Backup** to follow through with your pause request and stop the backup

## Advanced Backup Capabilities

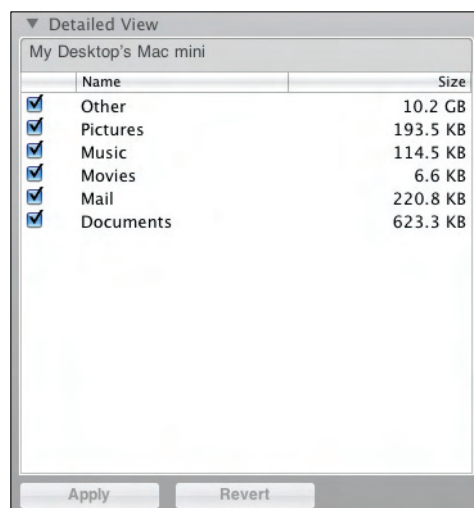
The advanced backup capabilities include:

- Selecting specific content to back up
- Changing the backup software settings:
  - Choosing the number of backup versions to keep
  - Pausing the backup until your computer is idle

## Selecting Specific Content to Back Up

To back up some of your computer files:

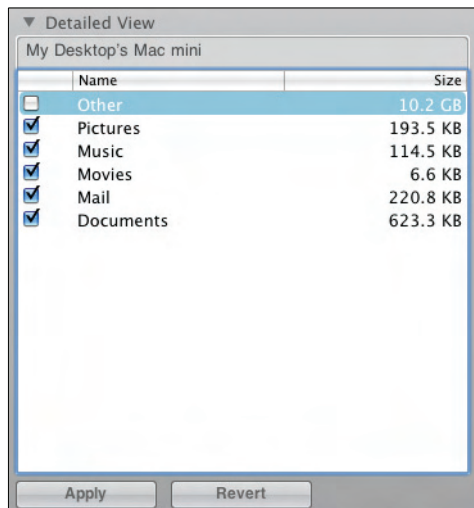
1. On the Backup screen (see Figure 8 on page 19), select **Detailed View** to open the backup files content box:



**2.** In the backup files content box:

- Select the check boxes for the categories of files that you want to include in the backup
- Clear the check boxes for the categories of files that you want to exclude from the backup

Changing the selections activates the **Apply** and **Revert** buttons:



- 3.** Click **Apply** to refresh the Content Gauge for your My Book drive.
- 4.** Click **Run Backup** to back up the selected categories of files.

## Changing the Backup Software Settings

To optimize your backup, you can:

- Specify the number of backup versions to keep for each file
- Pause backups until your computer is idle

To configure these backup options:

1. Click the **Settings** tab to display the Settings screen (see Figure 9).

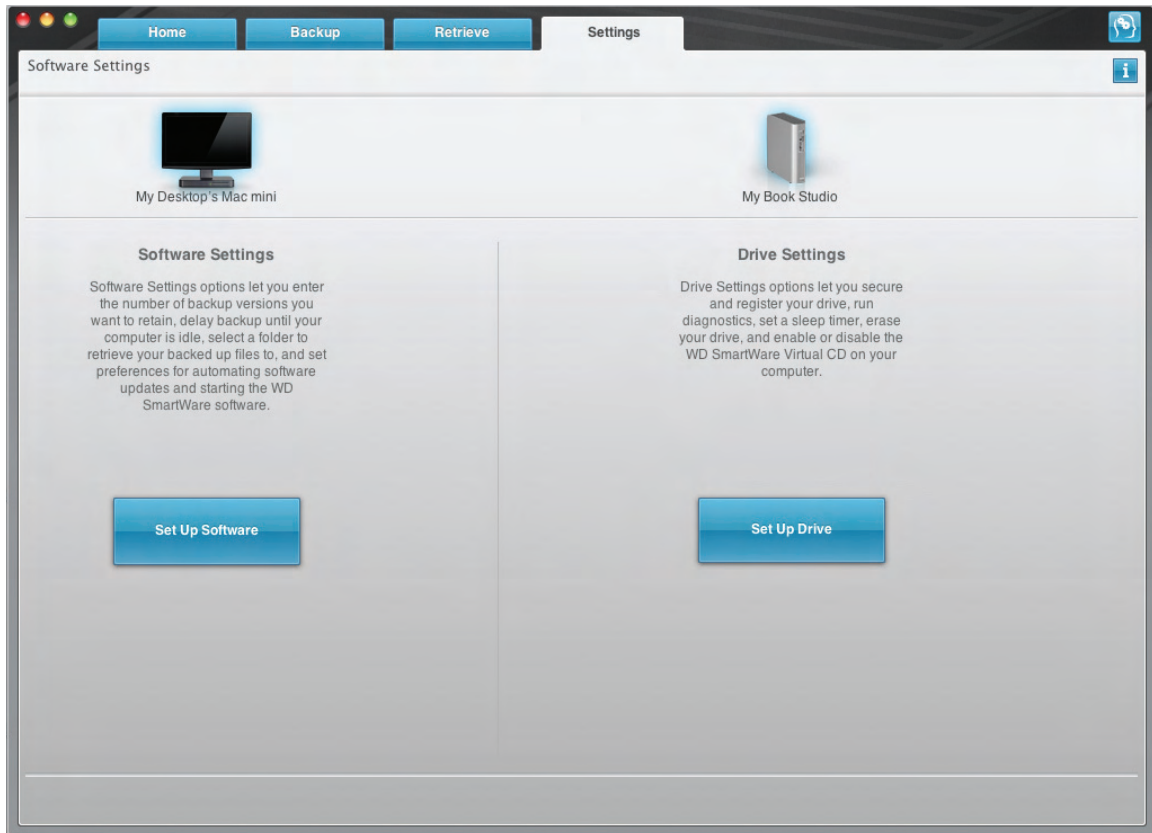


Figure 9. Settings Screen

2. Click **Set Up Software** to display the Software Settings screen (see Figure 10 on page 24).

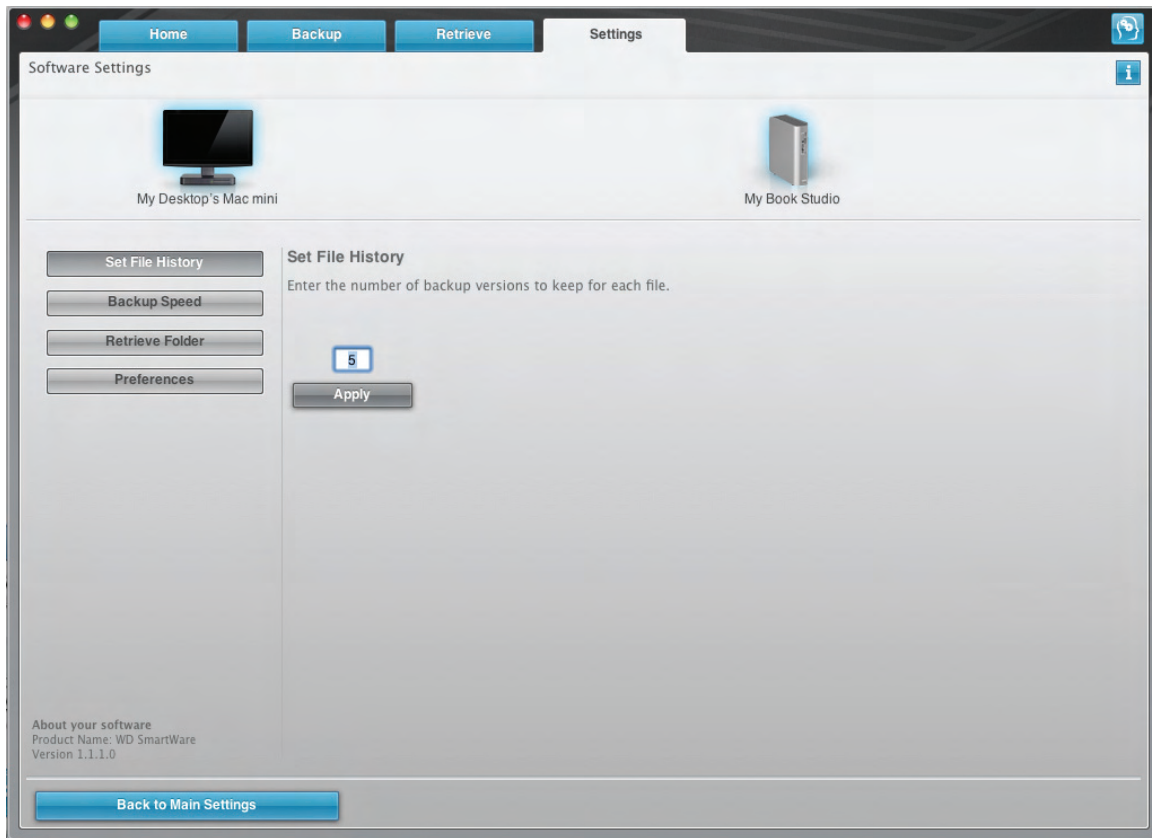


Figure 10. Software Settings Screen

**Specifying the Number of Backup Versions.** The WD SmartWare software enables you to keep up to 25 older versions of each file. If you overwrite or delete a file by mistake, or want to see the file a couple of versions ago, the WD SmartWare software has a copy for you.

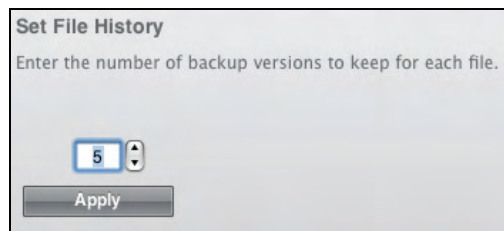
You will always have the most-recent specified number of versions of each file available for retrieves, and you can choose to keep between 1 and 25 versions.

Keeping more versions:

- Improves your ability to retrieve files from a longer back-in-time period
- Consumes more disk space

To specify the number of backup versions that you want to keep for each file:

1. On the Software Settings screen (see Figure 10), click **Set File History** to display the Set File History dialog:

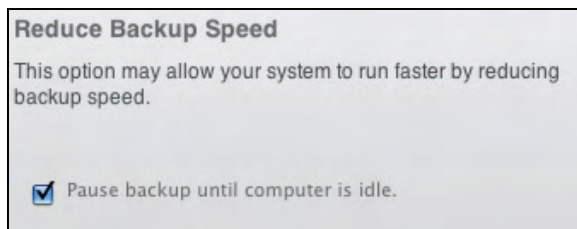


2. Specify the number of file versions that you want to keep (from 1 to 25) in the **Enter the number of backup versions to keep for each file** box.
3. Click **Apply** to save and implement the new number of backup versions.

**Pausing Backups Until Your Computer is Idle.** A large backup can take a lot of time, and can consume a lot of your system processing resources. Even with the WD SmartWare software running in the background, a backup can reduce your computer's response to other tasks.

Enabling the Backup Speed option directs the WD SmartWare software to pause backups until your computer is completely idle. This is the default configuration of the WD SmartWare software.

1. On the Software Settings screen (see Figure 10 on page 24), click **Backup Speed** to display the Reduce Backup Speed dialog:



2. Select or clear the **Pause backup until computer is idle** check box to enable or disable the Backup Speed option.

4

# Retrieving Backed Up Files

This chapter includes the following topics:

- About Retrieving Files
- Retrieving a File
- Retrieving a Folder
- Retrieving an Earlier Version of a File or Deleted Files
- Retrieving All Your Content

## About Retrieving Files

The WD SmartWare software makes it easy for you to retrieve files that have been backed up on your My Book drive and either:

- Restore them to their original locations on your computer
- Copy them to a special retrieve folder

Retrieve is generally a five-step process:

1. Choose the drive to retrieve content from on the Home screen.
2. Choose the backup you want to retrieve content from. (This is only required if you have created several different backups on your My Book drive.)
3. Choose whether content will be retrieved to a special retrieval folder or to the original location.
4. Choose what content to retrieve, either files, folders, or everything.
5. Retrieve the content.

## Retrieving a File

After selecting the drive on the Home screen, you can retrieve files or complete folders from your My Book drive. To retrieve a file from your drive:

1. Click the **Retrieve** tab to display the Retrieve screen (see Figure 11 on page 27).
2. In the **Backed Up Volumes** box, select the WD SmartWare volume that you want to retrieve a file from and click **Select Destination** to display the Select a destination for retrieved files screen (see Figure 12 on page 27).
3. On the Select a destination for retrieved files screen:

IF you want to copy your retrieved content to . . .	THEN . . .
Its original location,	<ol style="list-style-type: none"><li>a. Select the <b>To the Original Places</b> option.</li><li>b. Click <b>Select Files</b> to display the Select content to retrieve... screen and proceed to step 4 on page 28.</li></ol>
A retrieved content folder,	<ol style="list-style-type: none"><li>a. Select the <b>In a Retrieved Content Folder</b> option.</li><li>b. If you want to specify a different retrieve folder, click <b>Browse</b> and use the browse function to identify the new retrieve folder.</li><li>c. Click <b>Apply</b> to save and implement the new retrieve folder.</li><li>d. Click <b>Select Files</b> to display the Select content to retrieve... screen (see Figure 13) and proceed to step 4 on page 28.</li></ol>



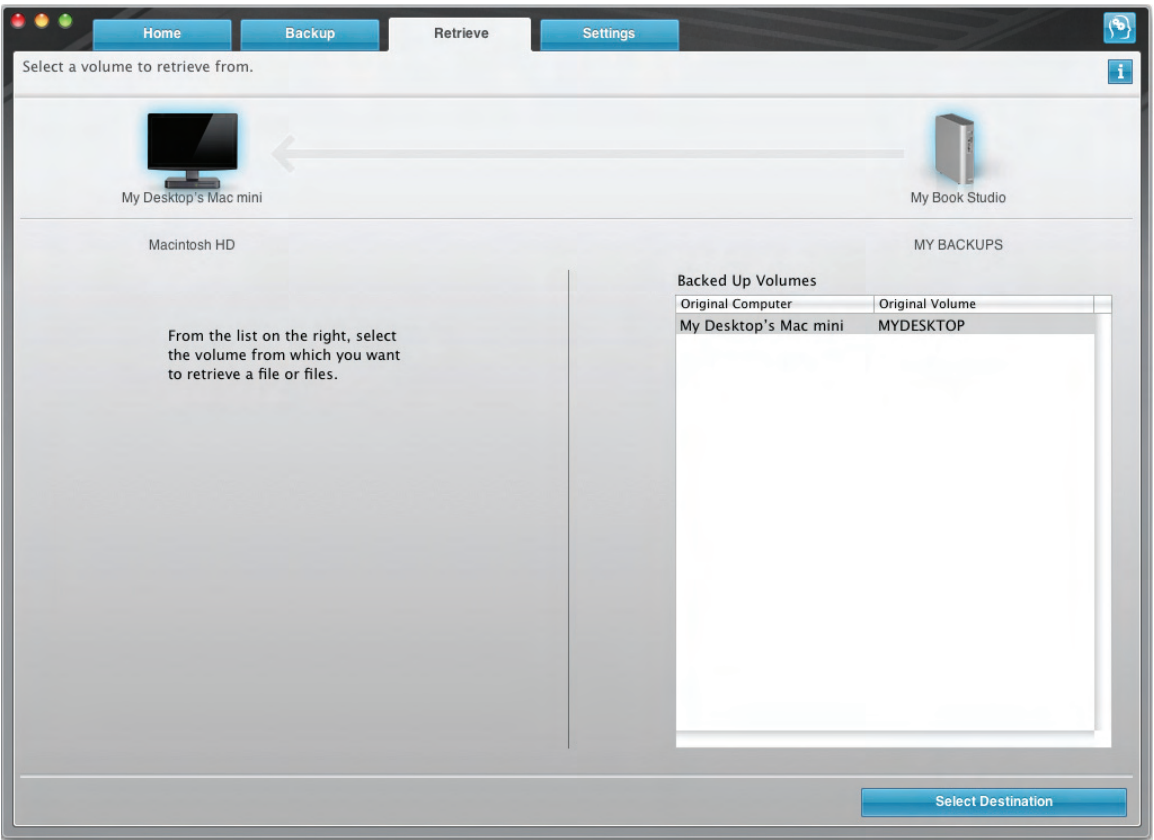


Figure 11. Retrieve Screen

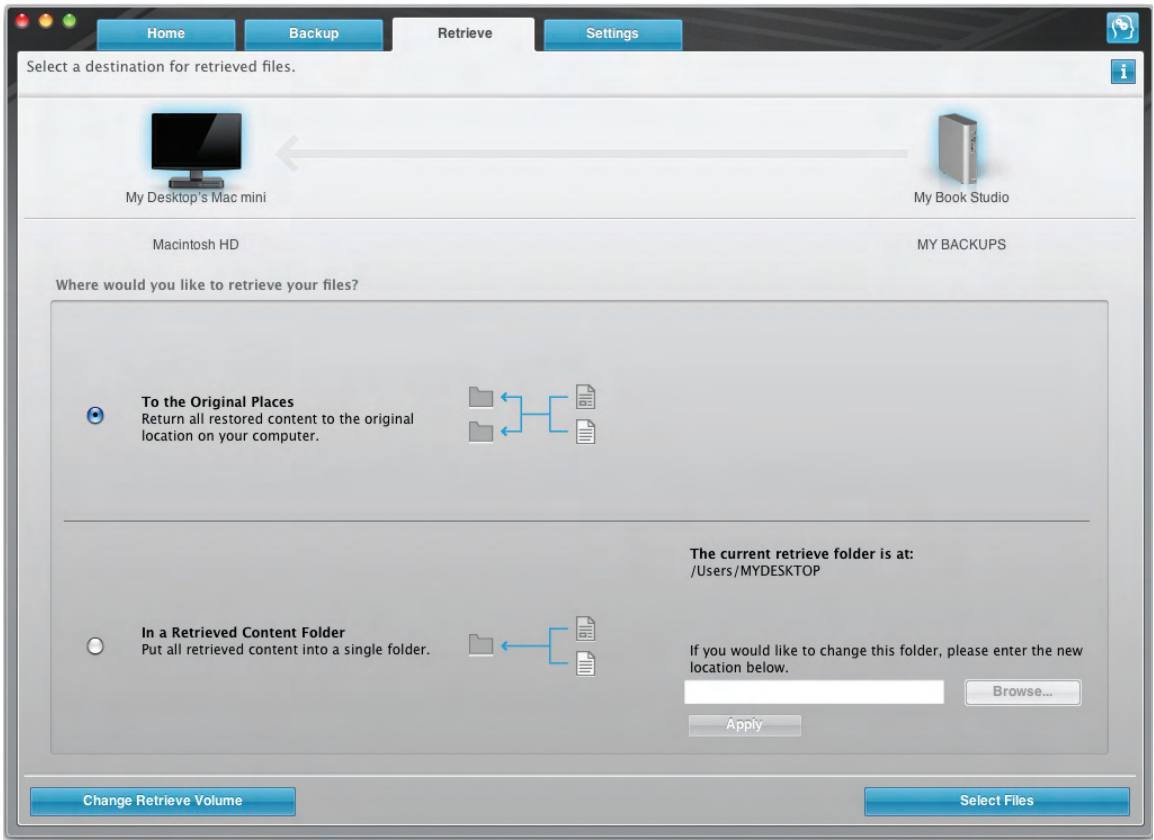


Figure 12. Select a Destination for Retrieved Files Screen



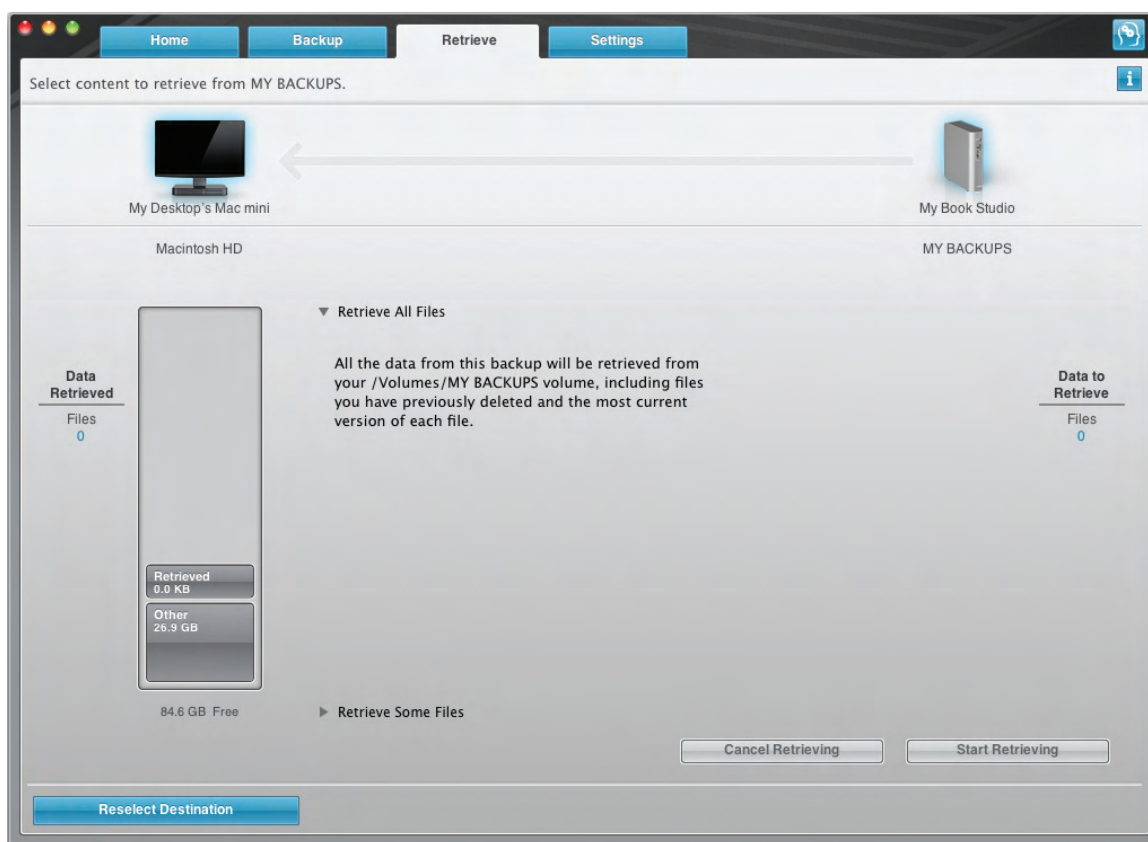


Figure 13. Select Content to Retrieve Screen

4. On the Select content to retrieve... screen, select **Retrieve Some Files** to display the retrieve files selection box (see Figure 14).

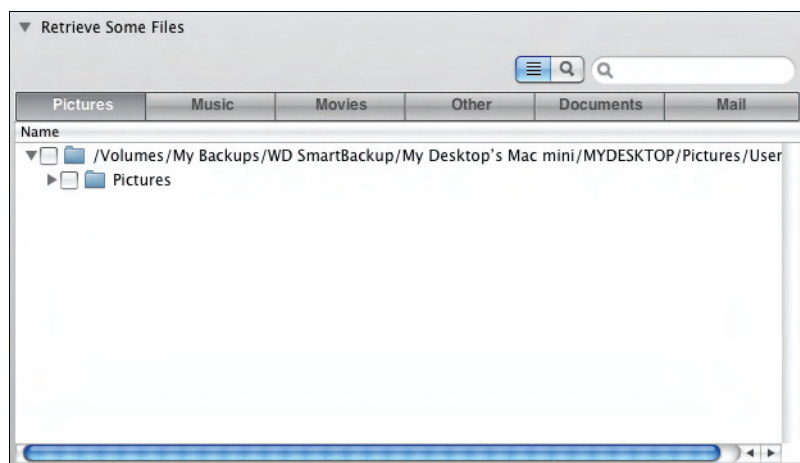


Figure 14. Retrieve Files Selection Box

5. Navigate through the folder structure to find the content you want. Also, you can use the search box by typing the name (or partial name) of the file or folder you are looking for:
  - Click the appropriate file category button to list the files by category:
    - **Pictures**
    - **Music**
    - **Movies**
    - **Documents**
    - **Other**
    - **Mail**
  - Select the view icon to list individual files.
  - Type all or part of the file name in the search box to locate the file and click **Enter** to initiate the search. To eliminate the search filter, delete all of the text in the search box and click **Enter**.
  - Select the check box for the file or folder that you want to retrieve.
6. Click **Start Retrieving**.
7. During the retrieve:
  - The Retrieve screen displays a progress bar and a message indicating the amount of data that has been copied to the specified retrieve location.
  - A **Cancel Retrieving** button is available for you to stop the retrieve.
8. A **Retrieval accomplished** message signifies completion of the retrieve.  
 A **Partial retrieve accomplished** message means the file you selected for the retrieve was not copied to the specified retrieve location. In this case, either a:
  - **Files Not Retrieved** message provides the number of files that were not retrieved and a link to a failed-to-retrieve information screen. Click the **View files** link to see the list of files and the reasons they were not retrieved.
  - **Destination is full** message means that your computer does not have sufficient disk space to complete the retrieve.

## Retrieving a Folder

To retrieve a folder from your drive, and all the content within the folder, which may be across multiple categories, in the retrieve files selection box (see Figure 14 on page 28), right-click the folder you want and choose **Select folder in all content categories**.

## Retrieving an Earlier Version of a File or Deleted Files

In the retrieve files selection box (see Figure 14 on page 28), check the **Show deleted files** box and/or the **Show older files** box. Now, when selecting content to retrieve, you can select individual files that were overwritten or deleted. Likewise, retrieving entire folders in this mode will retrieve older versions and deleted files as well.

## Retrieving All Your Content

On the Select content to retrieve... screen (see Figure 13 on page 28), choose the **Retrieve All Files** option, which will retrieve content across all categories and copy them to either their original locations or the Retrieve Contents folder.

## 5

## Locking and Unlocking Your Drive

This chapter includes the following topics:

[Password Protecting Your Drive](#)  
[Unlocking Your Drive](#)  
[Turning Off the Drive Lock Feature](#)  
[Changing Your Password](#)

### Password Protecting Your Drive

You should password protect your drive if you are worried that someone else will gain access to your drive and you do not want them to be able to access your content on the drive.

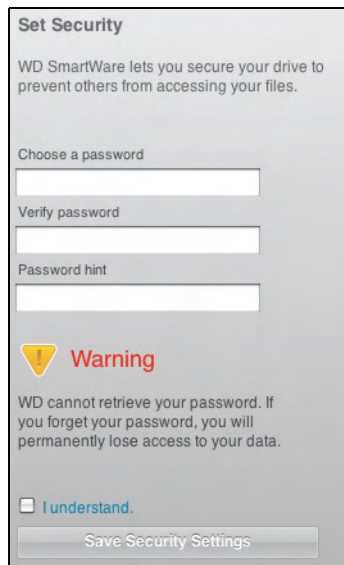
**CAUTION!** The WD SmartWare software uses your password to electronically lock and unlock your drive. If you forget your password, you will not be able to access the data that is on your drive or write new data to it. You will have to erase the drive before you can use it again.

You can reach the Security pages for password management during the initial getting started process or from the **Settings** tab and the Drive Settings screen within the WD SmartWare application. After you are on the password page, you can:

- Create a password
- Change a password
- Eliminate the need for a password

To create a password and keep others from accessing the files on your drive, as an example from the Settings tab:

1. Click the **Settings** tab to display the Settings screen (see Figure 9 on page 23).
2. Click **Set Up Drive** to display the Drive Settings screen (see Figure 15 on page 31).
3. Click **Security** to display the Set Security dialog:



The image shows a 'Set Security' dialog box. At the top, it says 'Set Security' and 'WD SmartWare lets you secure your drive to prevent others from accessing your files.' Below this are three input fields: 'Choose a password', 'Verify password', and 'Password hint'. A yellow warning triangle icon is next to the word 'Warning'. Below the warning, it says 'WD cannot retrieve your password. If you forget your password, you will permanently lose access to your data.' At the bottom, there is a checkbox labeled 'I understand.' and a 'Save Security Settings' button.

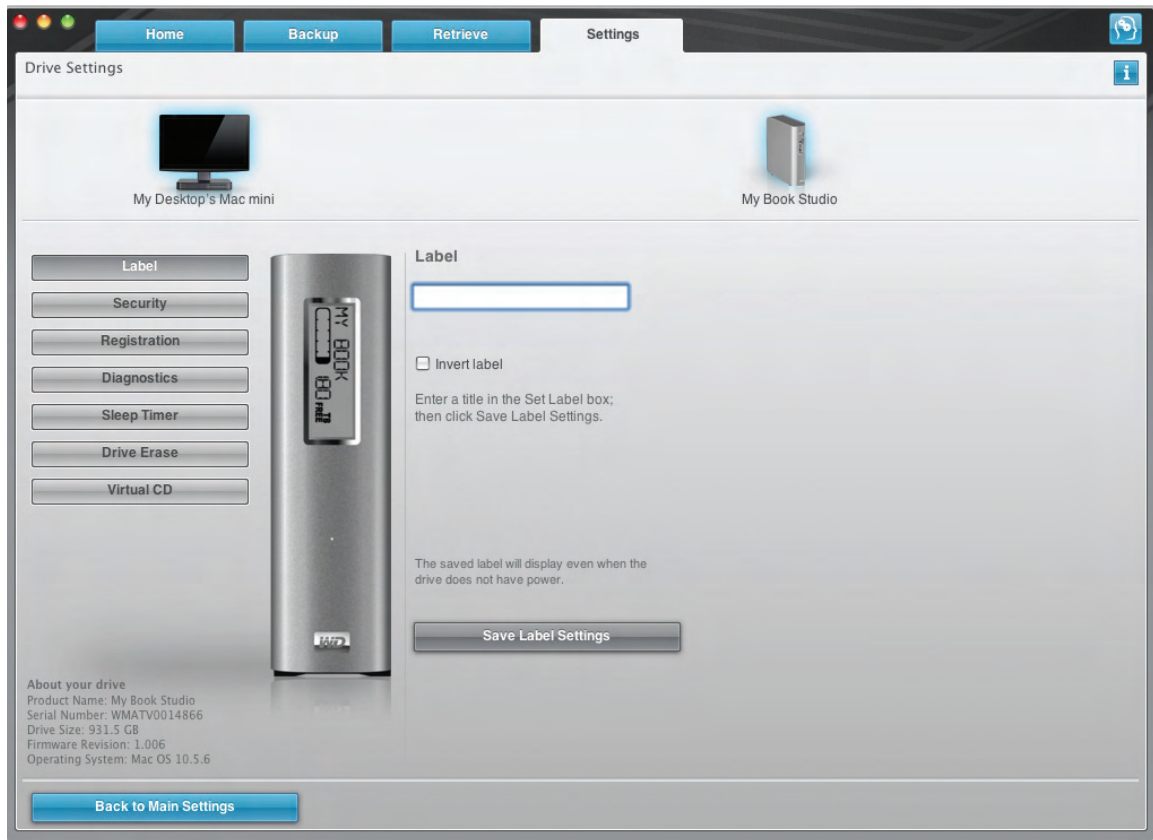


Figure 15. Drive Settings Screen

4. Type your password in the **Choose a password** box.
5. Retype your password in the **Verify password** box.
6. Type a hint to help remind yourself of your password in the **Password hint** box.
7. Read the warning about the possibility of data loss if you forget your password.
8. Click the **I understand** check box to signify that you accept the risk.
9. Click **Save Security Settings** to save your password and enable password protection for your drive.

**CAUTION!** After creating a password, the drive remains *unlocked* for as long as you continue your current work session. Then, the WD SmartWare software:

- Locks the drive when you shut down your computer, disconnect your drive, or your computer goes into the sleep mode
- Requires you to type your password to unlock the drive when you restart your computer or reconnect your drive

## Unlocking Your Drive

After you have created a password to keep others from accessing the files on your drive, you will have to type your password to unlock the drive whenever:

- You shut down and restart your computer
- You disconnect and reconnect the drive to your computer
- Your computer exits the sleep mode

You will have to do this even if you do not have the WD SmartWare software installed on your computer.

## Unlocking Your Drive with the WD SmartWare Software

Whenever you shut down and restart your computer, or disconnect and reconnect the drive to your computer, the WD SmartWare software displays the **Please provide your password** prompt:



To unlock your drive:

1. Type your password in the **Password** box.

If you provided a password hint when you created your password, click the **Password hint** pointer to see the hint.

2. Click **Unlock** to unlock your drive and enable the WD SmartWare software Backup, Retrieve, and Drive Settings functions.

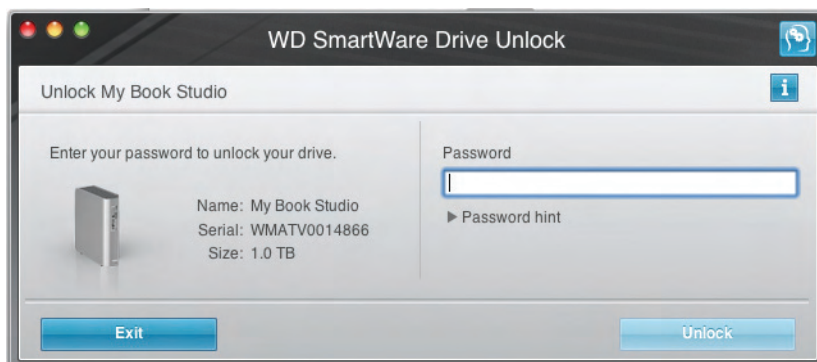
Clicking **Cancel** leaves the drive locked and inhibits access to the data on the drive and the WD SmartWare Backup, Retrieve, and Drive Settings functions.

## Unlocking Your Drive Without the WD SmartWare Software

Whenever you connect your password-protected drive to a computer that does not have the WD SmartWare software installed, you can still access the virtual CD partition on your drive, and install the WD SmartWare software as usual. You will not be able to access the data portion of your drive.

To unlock the drive without the WD SmartWare software installed:

1. Start the WD SmartWare Drive Unlock utility by either:
  - Using your computer's file management utility to open the WD SmartWare virtual CD and double-clicking the Unlock file
  - Double-clicking the WD SmartWare virtual CD on the desktop and double-clicking the **DriveUnlock** icon

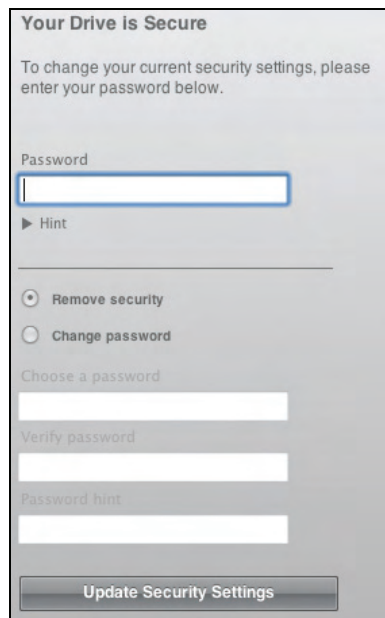


2. Type your password in the **Password** box.  
If you provided a password hint when you created your password, click the **Password hint** pointer to see the hint.
3. Click **Unlock** to unlock your drive.  
*Note:* If you click **Exit**, you will not be able to access the files on your drive.
4. At the **Your drive is now unlocked** prompt, click **Exit** to close the WD SmartWare Drive Unlock utility screen.

## Turning Off the Drive Lock Feature

To remove password protection from your drive:

1. Click **Security** on the Drive Settings screen (see Figure 15 on page 31) to display the Your Drive is Secure dialog:



2. Type your password in the **Password** box.
3. Select the **Remove security** option.
4. Click **Update Security Settings** to remove password protection from your drive and redisplay the Set Security dialog.

## Changing Your Password

To change your password:

1. On the Your Drive is Secure dialog, type your current password in the **Password** box.
2. Select the **Change password** option.
3. Type your new password in the **New password** box.
4. Retype your new password in the **Verify password** box.
5. Type a hint to help remind yourself of your new password in the **New password hint** box.
6. Click **Update Security Settings** to change your password.



## 6

## Managing and Customizing Your Drive

This chapter includes the following topics:

- Using the WD SmartWare Icon
- Opening the WD SmartWare Software
- Dismounting the Virtual CD
- Safely Dismounting the Drive
- Displaying the Drive Serial Number and Status
- Unlocking the Drive Manually
- Safely Dismounting the Drive
- Customizing Your Software Settings
- Customizing Your Drive Settings
- Uninstalling the WD SmartWare Software

### Using the WD SmartWare Icon

After you have installed the WD SmartWare software (see “Getting Started with the WD SmartWare Software” on page 10), the WD SmartWare icon displays in the bar at the top right of the screen.



By clicking the icon, you can:

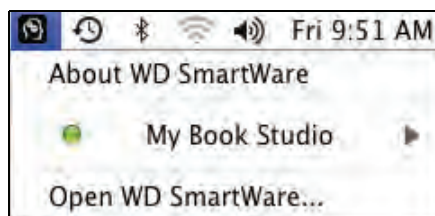
- Open the WD SmartWare software
- Safely dismount the drive and the virtual CD
- Check the remaining capacity of the drive
- Display the serial number of the drive
- Monitor drive status and temperature
- Unlock the drive manually

The following sections describe how to use the icon and other ways to do these things.

### Opening the WD SmartWare Software

If the WD SmartWare software does not open automatically, you have two ways to restart it:

- Click the WD SmartWare icon  and select **Open WD SmartWare:**



- In Finder, double-click **WD SmartWare** in the Applications list:



The WD SmartWare Home screen displays:




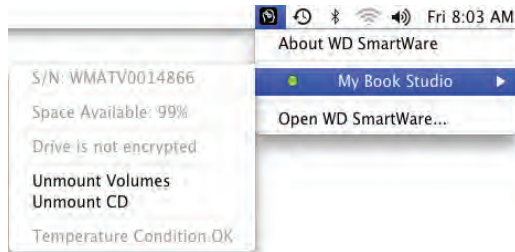


## Dismounting the Virtual CD

To be sure all data has been written to the drive before you physically disconnect it, dismount the Virtual CD as well as the drive or volume.

*Note:* There are other reasons you might want to dismount a VCD. If, for example, you have more than one My Book drive with the same software connected to your Mac, multiple My Book VCD icons display on your desktop. To clean up your desktop, you can dismount duplicate VCDs.

1. Click the WD SmartWare icon  to display a list of drives.
2. Select the My Book whose VCD you want to dismount, and then on the submenu, click **Unmount CD**:



## Safely Dismounting the Drive


You can safely dismount the drive from a Mac in three ways:

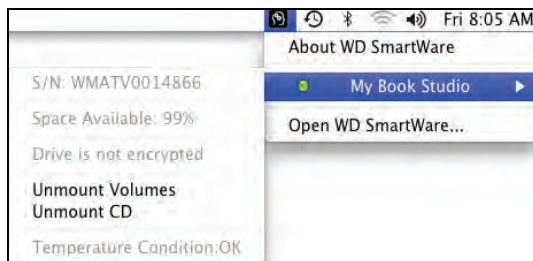
- Using the WD SmartWare icon
- Using the My Book icon
- Using the drive power button

**CAUTION!** To prevent data loss, close all active windows and applications before shutting down or removing the drive.

## Using the WD SmartWare Icon

To safely dismount the drive using the WD SmartWare icon:

1. Click the WD SmartWare icon  to display a list of drives.
2. Select the My Book, and then on the submenu, select **Unmount Volumes**:



If the drive has more than one volume, a prompt asks you to select the volume.

3. See “Dismounting the Virtual CD” and dismount the Virtual CD to make sure that all data has been written before you physically disconnect the drive.

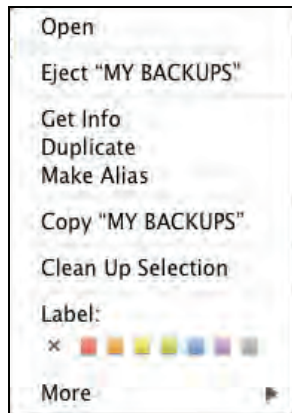
You might hear the drive power down as the Power LED flashes.

4. Wait for the drive icon to disappear from the desktop before disconnecting the drive.

## Using the My Book Icon

To safely dismount the drive using the My Book icon:

1. Right-click the My Book icon on the desktop and select **Eject "MY BACKUPS"** where "MY BACKUPS" is the name you assigned to the volume:



You might hear the drive power down as the Power LED flashes

2. Wait for the drive icon to disappear from the desktop before disconnecting the drive.

## Using the Drive Power Button

To safely dismount the drive using the drive power button:


1. Press the power button on the My Book drive (see Figure 3 on page 4).

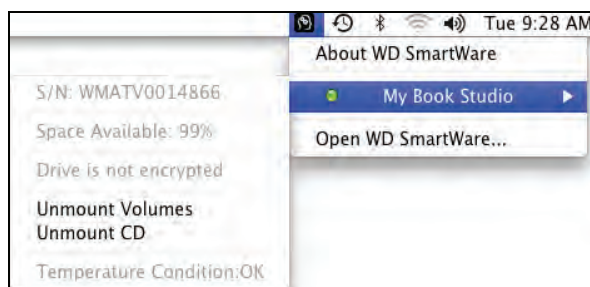
You might hear the drive power down as the Power LED flashes

2. Wait for the drive icon to disappear from the desktop before disconnecting the drive.

## Displaying the Drive Serial Number and Status

You can use the WD SmartWare icon to display the drive serial number and determine how full the drive is, whether it is locked, and its temperature condition:

1. Click the WD SmartWare icon  to display a list of drives and select the My Book drive:



2. The submenu displays the serial number of the drive, the space available if the drive is unlocked (not encrypted), and the temperature condition.

## Unlocking the Drive Manually

Two situations require you to unlock the drive manually:

- The WD SmartWare software is not available
- Your computer exits sleep mode

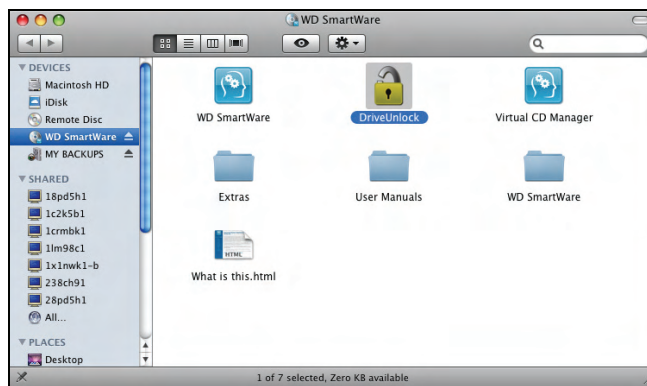
## When the WD SmartWare Software Is Not Available

You will need to unlock the drive manually if:

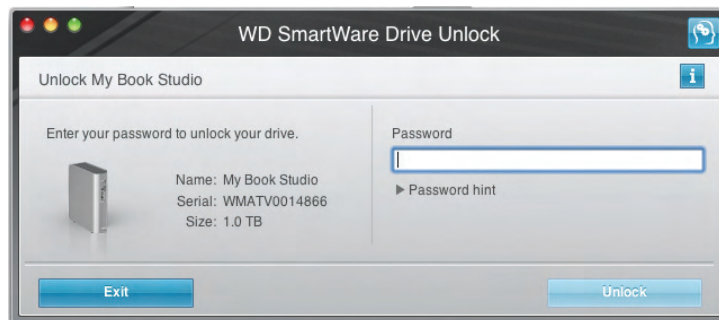
- You uninstalled the software and left the drive locked
- You moved your drive to another system, and need to unlock it without installing the software

To unlock the drive using the virtual CD:

1. Double-click the WD SmartWare virtual CD.
2. Double-click the **DriveUnlock** icon:



The WD SmartWare Drive Unlock screen displays:




3. Type your password in the **Password** box and click **Unlock**.
4. At the **Your drive is now unlocked** prompt, click **Exit** to close the WD SmartWare Drive Unlock screen.

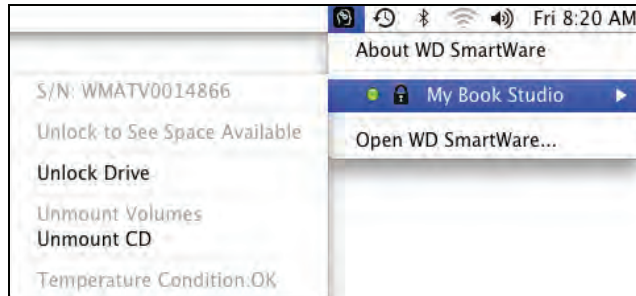
## When Your Computer Exits Sleep Mode

If your computer goes into sleep mode, an unlock screen might not display when you reactivate it. To unlock the drive, you can either:

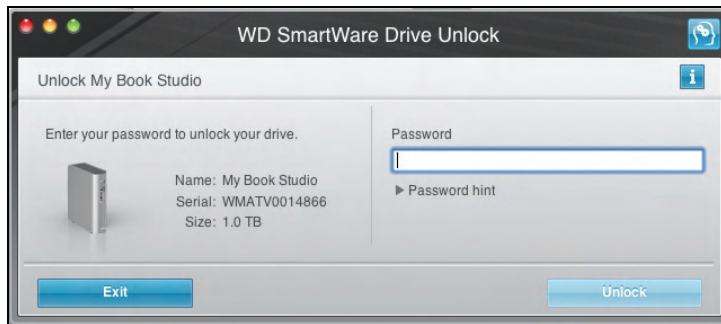
- Use the VCD as described in “When the WD SmartWare Software Is Not Available” on page 38
- Use the WD SmartWare icon

To unlock the drive using the WD SmartWare icon:

1. Click the WD SmartWare icon .
2. Select the drive, and then select **Unlock Drive**:



3. The WD SmartWare Drive Unlock screen displays. Type your password in the **Password** box and click **Unlock**:



4. At the **Your drive is now unlocked** prompt, click **Exit** to close the WD SmartWare Drive Unlock screen.

## Customizing Your Software Settings

The WD SmartWare software makes it easy for you to quickly customize its own software settings for the best possible performance with your drive by:

- Specifying the number of backup versions that you want to keep for each file
- Inhibiting backups until times when your computer is idle
- Specifying a unique folder on your computer to store files retrieved from your drive
- Automatically:
  - Displaying the WD SmartWare Home screen whenever you connect your drive to your computer
  - Checking for WD SmartWare software updates

To customize your WD SmartWare software settings for the best possible performance with your drive, on the Software Settings screen (see Figure 10 on page 24):

IF you want to . . .	THEN click . . .	AND see . . .
Change the number of backup versions to keep for each file,	<b>Set File History</b>	“Specifying the Number of Backup Versions” on page 24.
Enable anytime backups or inhibit them until your computer is idle,	<b>Backup Speed</b>	“Pausing Backups Until Your Computer is Idle” on page 25.
Specify a path to a different retrieve folder,	<b>Retrieve Folder</b>	“Specifying a Different Retrieve Folder” in the next section.
Change the options that: <ul style="list-style-type: none"> <li>• Display the WD SmartWare Home screen whenever you reconnect your WD SmartWare drive to your computer</li> <li>• Check for software updates</li> </ul>	<b>Preferences</b>	“Setting the Preferences Options” on page 41.

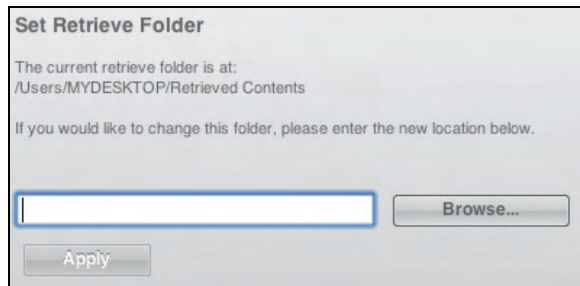
## Specifying a Different Retrieve Folder

When you start a retrieve, you can choose whether you want to store the retrieved files in either:

- Their original locations on your computer
- A Retrieved Content folder

By default, the WD SmartWare software creates and uses a Retrieved Content subfolder in your MYDESKTOP folder. To specify a different folder:

1. Either create a new folder or determine which existing folder you want to use.
2. On the Software Settings screen (see Figure 10 on page 24), click **Retrieve Folder** to display the Set Retrieve Folder dialog:



3. Click **Browse** and use the browse function to identify the new retrieve folder.
4. Click **Apply** to save and implement the new retrieve folder.

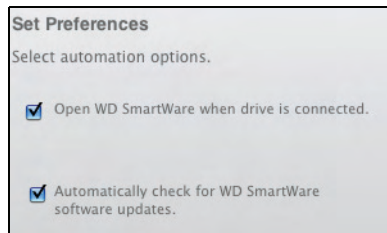
## Setting the Preferences Options

When enabled, the Preferences options:

- Display the WD SmartWare Home screen whenever you reconnect your drive to your computer  
This is the default configuration of the WD SmartWare software, and it is recommended when you routinely leave your drive connected to your computer. You might want to disable this option and open the WD SmartWare Home screen whenever you need it if you routinely disconnect and reconnect your drive to your computer.
- Check for software updates  
This ensures that you are always using the most-recent software version.

To enable or disable the Preferences options:

1. On the Software Settings screen (see Figure 10 on page 24), click **Preferences** to display the Set Preferences dialog:



2. Select or clear the check boxes to enable or disable the Preferences options:
  - **Open WD SmartWare when drive is connected**
  - **Automatically check for WD SmartWare software updates**

## Customizing Your Drive Settings

The WD SmartWare software makes it easy for you to quickly customize the settings of your drive for the best possible performance:

- **Label**—Create a custom name (label) that appears in the “spine” area of your My Book drive.
- **Security**—Create, modify, and disable passwords that keep others from accessing the files on your drive.
- **Registration**—Register your drive to receive free technical support during the warranty period and find out about software updates, product enhancements, and price discount opportunities.
- **Diagnostics**—Perform diagnostics and status checks to make sure your drive is working properly.
- **Sleep Timer**—Turn your drive off during periods of extended inactivity to conserve power and extend the life of the drive.
- **Drive Erase**—Erase all of the contents on the drive, including any password that has been set.
- **Virtual CD**—Show or hide the virtual CD icon and drive listing in your desktop displays.

To customize your drive settings for the best possible performance with the WD SmartWare software, on the Drive Settings screen (see Figure 15 on page 31):

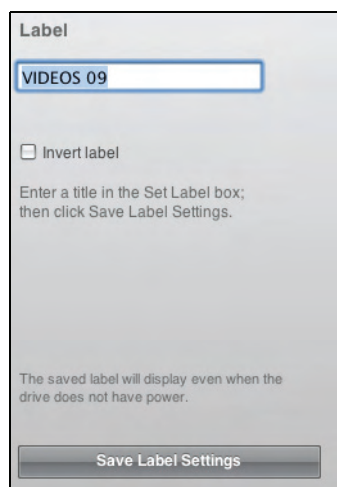
IF you want to . . .	THEN click . . .	AND see . . .
Create a custom name (label) that appears in the “spine” area of your My Book drive,	<b>Label</b>	“Specifying a Name for Your Drive” in the next section.
Use a password to keep others from accessing the files on your drive,	<b>Security</b>	“Password Protecting Your Drive” on page 30.
Change your password,	<b>Security</b>	“Changing Your Password” on page 33.
Remove password protection from your drive,	<b>Security</b>	“Turning Off the Drive Lock Feature” on page 33.
Register your drive to receive free technical support during the warranty period and be kept up-to-date on the latest WD products,	<b>Registration</b>	“Registering Your Drive” on page 43.
Perform routine drive diagnostics and status checks,	<b>Diagnostics</b>	“Checking Drive Health” on page 47.
Specify an inactive time interval to turn off your drive,	<b>Sleep Timer</b>	“Setting the Drive Sleep Timer” on page 44.
Erase your drive so you can use it again if you have implemented password protection and then lost or forgotten your password,	<b>Drive Erase</b>	“Erasing Your Drive” on page 44.
Enable (show) or disable (hide) the virtual CD icon for your drive,	<b>Virtual CD</b>	“Showing or Hiding the Virtual CD Icon” on page 45.

## Specifying a Name for Your Drive

The custom label that you specify remains on your drive even when it is turned off or disconnected from your computer.

To specify a name for your drive:

1. On the Drive Settings screen (see Figure 15 on page 31), click **Label** to display the Label dialog:



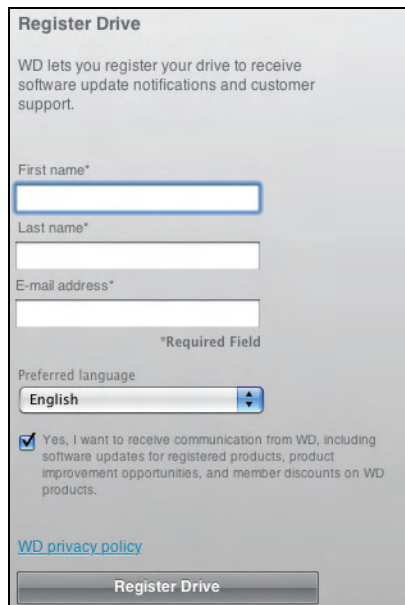


2. Type your label in the **Label** box.
3. Select or clear the **Invert label** check box to establish the label presentation that you want—dark text against a light background, or vice versa.
4. Click **Save Label Settings** to apply the label to your drive.

## Registering Your Drive

The WD SmartWare software uses your computer's Internet connection to register your drive. Register your drive to be kept up-to-date on the latest WD products:

1. Make sure that your computer is connected to the Internet.
2. On the Drive Settings screen (see Figure 15 on page 31), click **Registration** to display the Register Drive dialog:



The image shows a 'Register Drive' dialog box. At the top, it says 'Register Drive' and 'WD lets you register your drive to receive software update notifications and customer support.' Below this are three text input fields: 'First name\*', 'Last name\*', and 'E-mail address\*'. A small asterisk with the text '\*Required Field' is positioned below the email field. Below the input fields is a 'Preferred language' dropdown menu currently set to 'English'. Underneath the dropdown is a checked checkbox with the text 'Yes, I want to receive communication from WD, including software updates for registered products, product improvement opportunities, and member discounts on WD products.' Below the checkbox is a blue hyperlink 'WD privacy policy'. At the bottom of the dialog is a 'Register Drive' button.

3. Type your first name in the **First name** box.
4. Type your last name in the **Last name** box.
5. Type your e-mail address in the **E-mail address** box.
6. Select your language in the **Preferred language** box.
7. Select or clear the **Yes, I want to receive communication...** check box to specify whether or not you want to receive e-mail notifications about software updates, product enhancements, and price discount opportunities.
8. Click **Register Drive** to register your drive.

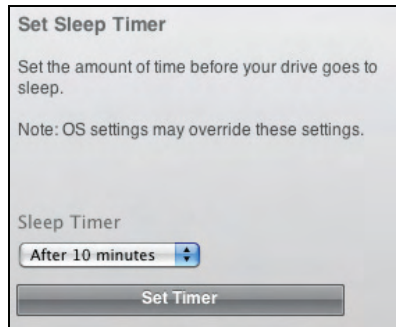


## Setting the Drive Sleep Timer

The drive sleep timer turns off the power to your drive after a certain period of inactivity to conserve power and minimize long-term wear on the drive.

To specify the inactivity period for the sleep timer:

1. On the Drive Settings screen (see Figure 15 on page 31), click **Sleep Timer** to display the Set Sleep Timer dialog:



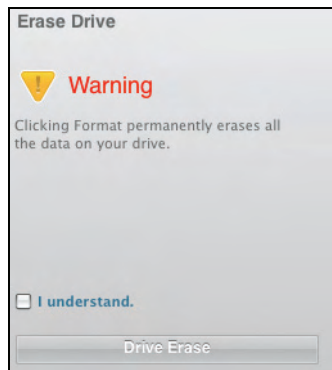
2. In the **Sleep Timer** box, select the inactivity time interval at which you want to turn off the drive.
3. Click **Set Timer** to save and implement your sleep timer selection.

## Erasing Your Drive

**CAUTION! Erasing your drive permanently deletes all of the data on your drive. Always make sure that you no longer need any of the data on your drive before erasing the drive.**

To erase your drive:

1. On the Drive Settings screen (see Figure 15 on page 31), click **Drive Erase** to display the Erase Drive dialog:



2. Read the warning about the loss of data if you erase your drive.
3. Click the **I understand** check box to signify that you accept the risk.
4. Click **Drive Erase** to erase your drive.

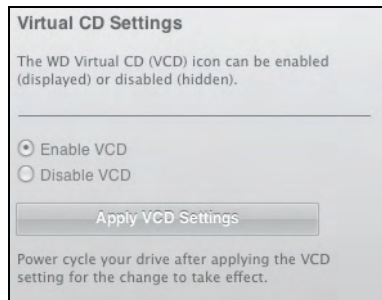
*Note:* In addition to deleting all of the data on your drive, erasing your drive also removes your password. If you created a password to protect your drive, you will need to do it again after erasing the drive. (See “Password Protecting Your Drive” on page 30.)

## Showing or Hiding the Virtual CD Icon

Each WD SmartWare drive that you connect to your computer adds its own virtual CD icon to your desktop display. Use the Virtual CD Settings dialog to enable (show) or disable (hide) the virtual CD icon for your drive.

*Note:* Hiding the virtual CD icon also disables password protection for your drive. If you disable (hide) the VCD, you will not be able to create a password to protect your drive. Or, if you have already created a password, you will not be able to disable (hide) the VCD until you remove password protection (see “Turning Off the Drive Lock Feature” on page 33).

1. On the Drive Settings screen (see Figure 15 on page 31), click **Virtual CD** to display the Virtual CD Settings dialog:



2. Click:
  - **Enable VCD** if you want to show the virtual CD icon
  - **Disable VCD** if you want to hide the virtual CD icon
3. Click **Apply VCD Settings** to implement your selection.
4. As prompted, for your change to take effect, you must power cycle your My Book drive:
  - a. Disconnect the USB or FireWire cable from your drive.
  - b. Either disconnect the AC power adapter cable or press the drive power button to off (Figure 3 on page 4).
  - c. Wait ten seconds.
  - d. Either reconnect the AC power adapter cable or press the drive power button to on.
  - e. Reconnect the USB or FireWire cable to your drive.
5. Check your desktop display to confirm the change.

## Uninstalling the WD SmartWare Software

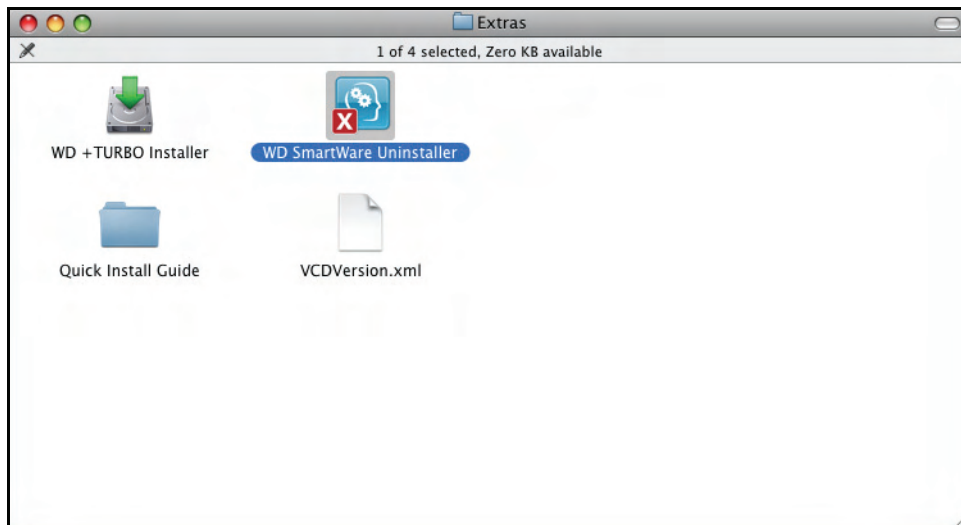
**Important:** You can easily uninstall the software. However, you will need to restart the backup job manually after reinstalling the software as uninstalling deletes all existing backup job configurations. (See “Backing Up Your Computer Files” on page 18.)

To uninstall the WD SmartWare software:

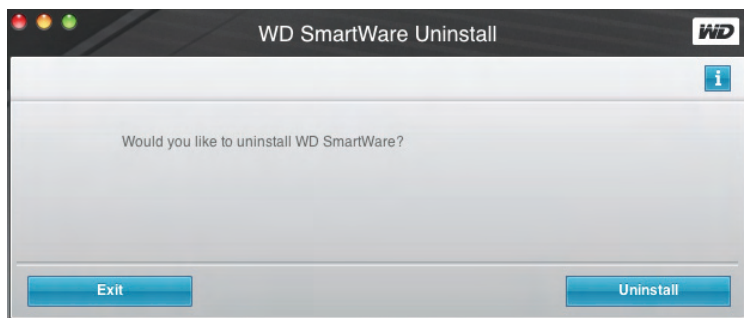
1. Double-click the WD SmartWare virtual CD icon on the desktop or in the Applications list and double-click the Extras folder on the screen that displays:



2. Double-click the WD SmartWare Uninstaller icon:



3. Click **Uninstall** on the WD SmartWare Uninstall screen:



## 7

## Checking Drive Health

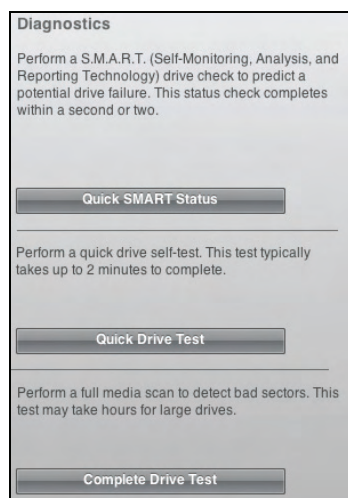
The data files on your My Book drive are important to you. The WD SmartWare software has several built-in diagnostic tools to help make sure that your drive is performing well. Run one of the following tests if you are concerned that your drive is not operating properly:

Diagnostic Tool	Description
Quick S.M.A.R.T. Status Check	S.M.A.R.T. is a failure-prediction function that continuously monitors key internal performance attributes of the drive. A detected increase in drive temperature, noise, or read/write errors, for example, can provide an indication that the drive might be approaching a serious failure condition. With advanced warning, you could take precautionary measures, like moving your data to another drive, before a failure occurs. The result of a quick S.M.A.R.T. status check is a pass or fail evaluation of the drive's condition. The S.M.A.R.T. status check completes within a second or two.
Quick Drive Test	Your My Book drive has a built-in Data Lifeguard diagnostic utility that tests the drive for error conditions. The quick drive test checks the drive for major performance problems. The result of a quick drive test is a pass or fail evaluation of the drive's condition. The quick drive test can take several minutes to complete.
Complete Drive Test	The most comprehensive drive diagnostic is the complete drive test. It methodically tests each and every sector for error conditions, and inserts bad-sector markers as required. The complete drive test can take several hours to complete, depending on the size and data configuration of your drive.

The best time to run the drive diagnostics and status checks is on a regular basis, before you encounter any problems with your drive. And, because they are so fast, running the quick S.M.A.R.T. status check and the quick drive test provides a high level of assurance with minimal inconvenience. Then, run all three whenever you encounter disk error conditions when backing up or retrieving files.

To run drive diagnostics and status checks:

1. On the Drive Settings screen (see Figure 15 on page 31), click **Diagnostics** to display the Diagnostics dialog:



2. Click the button for the test that you want to run:

- **Quick SMART Status**
- **Quick Drive Test**
- **Complete Drive Test**

## 8

## Using the Drive with Windows

The My Book drive is preformatted as a single HFS+J partition for compatibility with Mac OS X operating systems. You can reformat it to NTFS for compatibility with Windows operating systems. (You can also reformat a Windows drive to HFS+J.)

This chapter includes the following topics:

- Reformatting the Drive
- Installing the Drive on Windows Computers
- Getting Started with the WD SmartWare Software on Windows
- Using the WD SmartWare Icon
- Opening the WD SmartWare Software
- Checking Drive Status and Temperature
- Monitoring Icon Alerts
- Disconnecting the Drive Safely
- Enabling the Backup and Retrieve Functions
- Uninstalling the WD SmartWare Software
- Getting Started Without the WD SmartWare Software

### Reformatting the Drive

**CAUTION!** Reformatting the drive erases all its contents. If you have already saved files on the drive, be sure to back them up before reformatting it.

Go to [support.wdc.com](http://support.wdc.com) and refer to the appropriate Knowledge Base Answer ID for information about reformatting a Mac drive:

- 3645 for Windows XP
- 3647 for Windows Vista
- 3322 for Windows 7

See “Troubleshooting” on page 61 for more information about reformatting a drive.

Use the procedures in the following sections after reformatting your drive for use with a Windows computer.

### Installing the Drive on Windows Computers

This section describes installing the drive for the first time. Depending on your computer's operating system, see:

- “Installing on Windows XP Computers” on page 50
- “Installing on Windows Vista or Windows 7 Computers” on page 52

## Installing on Windows XP Computers

To install your My Book Studio or Studio LX drive on a Windows XP computer:

1. After physically connecting the drive as shown in Figure 4 on page 8, click **Cancel** to close the Found New Hardware Wizard:



*Note:* WD SmartWare will install the driver for this drive.

2. One or two screens might appear, depending on your computer setup:

IF AutoRun (AutoPlay) is . . . on your computer,	THEN . . .
Enabled	Proceed to step 3.
Disabled	Skip to step 5.

3. AutoRun (AutoPlay) enabled— The Welcome to WD SmartWare screen displays:



If a flash video player is installed on your computer, the screen is animated.

4. Disregard the rest of this procedure and continue to “Getting Started with the WD SmartWare Software on Windows” on page 54.

*Note:* If you do not want to install the WD SmartWare software, go to “Getting Started Without the WD SmartWare Software” on page 60 instead.

5. AutoRun (AutoPlay) disabled—Open **Computer**.
6. Double-click the WD SmartWare virtual CD that is listed under Devices with Removable Storage:



*Note:* WD SmartWare software is provided in the form of a virtual CD (VCD) drive on your My Book drive. The VCD displays on your desktop and behaves just like a physical CD. To view the contents of the VCD, such as the documentation and some extra programs, right-click and select **Open**.

The Welcome to WD SmartWare screen displays:



If a flash video player is installed on your computer, the screen is animated.

7. Continue to “Getting Started with the WD SmartWare Software” on page 10.

*Note:* If you do not want to install the WD SmartWare software, see “Getting Started Without the WD SmartWare Software” on page 60 instead.



## Installing on Windows Vista or Windows 7 Computers

To install your My Book Studio or Studio LX drive on a Windows Vista or Windows 7 computer:

1. After physically connecting the drive as shown in Figure 4 on page 8, click **Cancel** to close the Found New Hardware screen:



*Note:* The WD SmartWare software will install the appropriate driver for the drive.

2. Two or three screens might appear, depending on your computer setup:

IF AutoRun (AutoPlay) is . . . on your computer,	THEN . . .
Enabled	Proceed to step 3.
Disabled	Skip to step 5.

3. AutoRun (AutoPlay) enabled—Click **Run WDSmartWare.exe** on the AutoPlay screen:



The Welcome to WD SmartWare screen displays:



4. Disregard the rest of this procedure and continue to “Getting Started with the WD SmartWare Software on Windows” on page 54.

*Note:* If you do not want to install the WD SmartWare software, go to “Getting Started Without the WD SmartWare Software” on page 60 instead.

5. AutoRun (AutoPlay) disabled—Open **Computer**.
6. Double-click the WD SmartWare virtual CD that is listed under Devices with Removable Storage:



*Note:* WD SmartWare software is provided in the form of a virtual CD (VCD) drive on your My Book drive. The VCD displays on your desktop and behaves just like a physical CD. To view the contents of the VCD, such as the documentation and some extra programs, right-click and select **Open**.

The Welcome to WD SmartWare screen displays:



If a flash video player is installed on your computer, the screen is animated.

7. Continue to “Getting Started with the WD SmartWare Software on Windows” in the next section.

*Note:* If you do not want to install the WD SmartWare software, see “Getting Started Without the WD SmartWare Software” on page 60 instead.

## Getting Started with the WD SmartWare Software on Windows

To get started with WD SmartWare software:

1. The **What would you like to do?** prompt on the Welcome to WD SmartWare screen provides three options for getting started with WD SmartWare software:

IF you want to install . . .	THEN click . . .
The full version of the WD SmartWare software, with continuous automatic backup, retrieve, drive lock password protection, and drive maintenance features and: <ul style="list-style-type: none"><li>• Run your first backup,</li><li>• Create a drive label,</li><li>• Password protect or register your drive,</li></ul>	<b>Install WD SmartWare.</b>
Only the WD SmartWare software drive lock password protection and drive maintenance features, and: <ul style="list-style-type: none"><li>• Create a drive label,</li><li>• Password protect or register your drive,</li></ul>	<b>Install Drive Settings.</b>
The full version of the WD SmartWare software and retrieve files that you have already backed up to your My Book drive on another computer,	<b>Retrieve a backup.</b>

2. Read the license agreement and click **Accept** to continue.

3. Wait for the software installation to complete. This could take several minutes.
4. After the software installation completes:

---

**IF you clicked . . . at step 1, THEN the WD SmartWare software displays . . .**

---

<b>Install WD SmartWare</b>	<p>The initial Backup screen for performing your first backup:</p> <ol style="list-style-type: none"> <li>a. See Figure 5 on page 11 and “Backing Up Your Computer Files” on page 18.</li> <li>b. Proceed to step 5.</li> </ol>
<b>Install Drive Settings</b>	<p>The initial Drive Settings screen for securing and registering your drive:</p> <ol style="list-style-type: none"> <li>a. See Figure 6 on page 11 and: <ul style="list-style-type: none"> <li>• “Specifying a Name for Your Drive” on page 42</li> <li>• “Password Protecting Your Drive” on page 30</li> <li>• “Registering Your Drive” on page 43</li> </ul> </li> <li>b. Skip to step 6.</li> </ol>
<b>Retrieve a backup</b>	<p>The Home screen for accessing all WD SmartWare functions:</p> <ol style="list-style-type: none"> <li>a. See Figure 7 on page 12 and “Retrieving Backed Up Files” on page 26.</li> <li>b. This completes the getting started procedure after selecting <b>Retrieve a backup</b>.</li> </ol>

---

*Note:* The initial Backup and Drive Settings screens only appear one time—the first time you install the WD SmartWare software on your computer. After that, launching the software displays the Home screen so you can choose what you want to do.

5. After completing your initial backup, click **Continue** on the initial Backup screen to display the WD SmartWare Home screen (Figure 7 on page 12).

This completes the getting started procedure after selecting **Install WD SmartWare**.

6. After specifying a name, password protecting, or registering your drive, click **Finish** to close the initial Drive Settings screen.

This completes the getting started procedure after selecting **Install Drive Settings**.

In this case, however:

- Opening the WD SmartWare software displays the drive maintenance Home screen (see Figure 16 on page 56) with the Settings tab for performing all drive maintenance functions (see “Customizing Your Drive Settings” on page 41.).
- Clicking the Settings tab displays the drive maintenance Drive Settings screen with a **Preferences** button that you can use to enable the WD SmartWare Backup and Retrieve functions (see Figure 17 on page 56 and “Enabling the Backup and Retrieve Functions” on page 59).

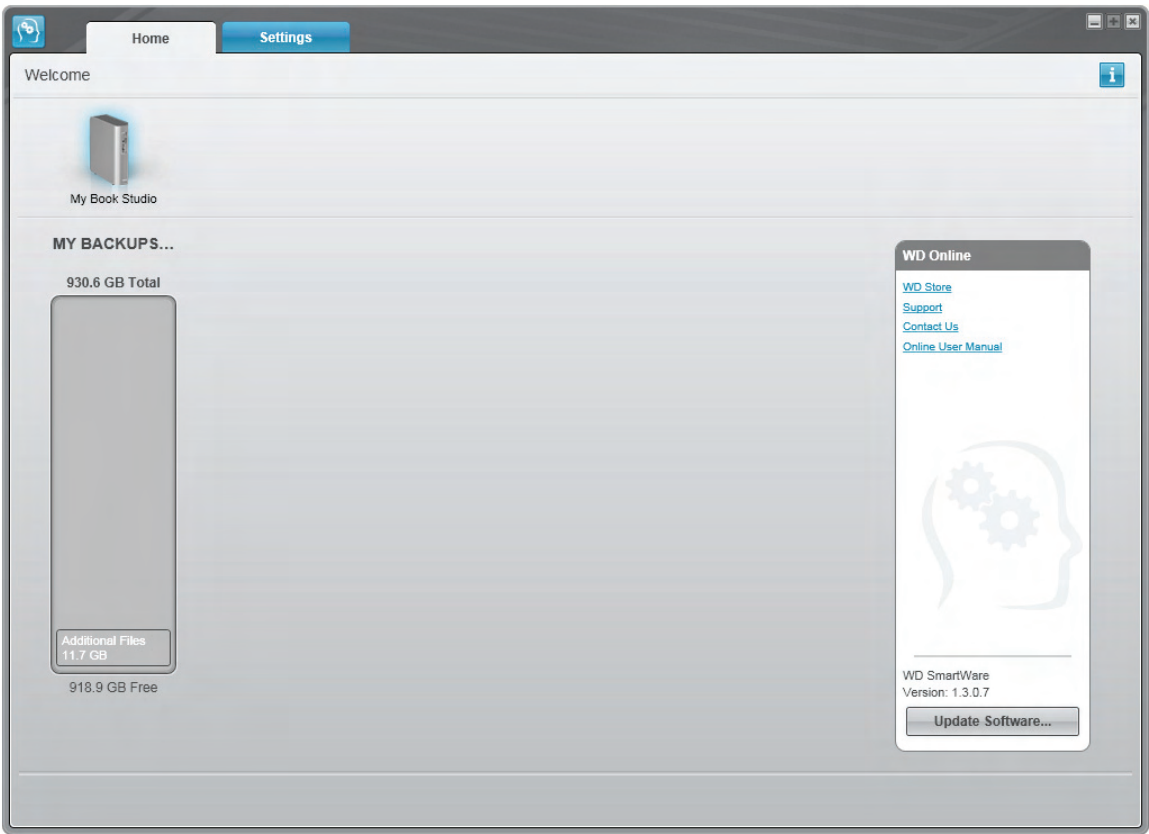


Figure 16. Drive Maintenance Home Screen

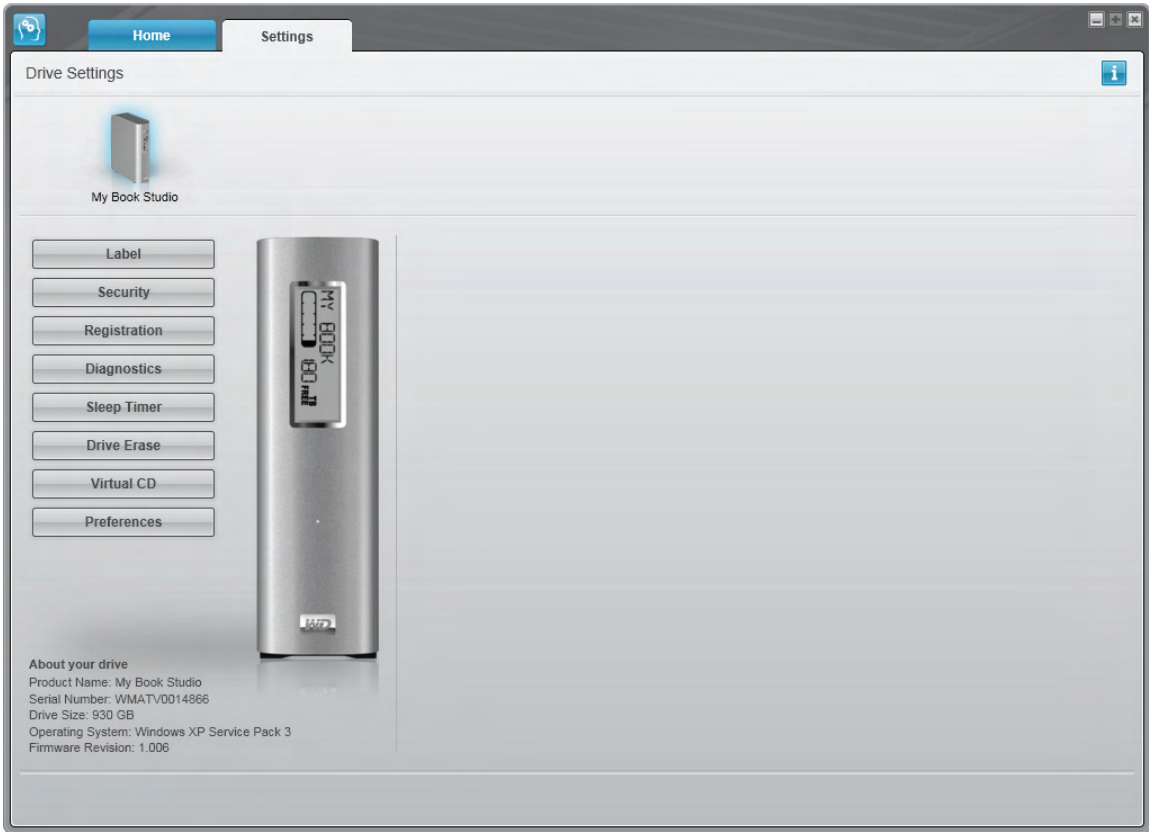

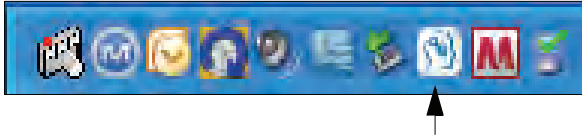


Figure 17. Drive Maintenance Drive Settings Screen

## Using the WD SmartWare Icon

After you have installed the WD SmartWare software (see “Getting Started with the WD SmartWare Software on Windows” on page 54), the WD SmartWare icon  displays in the Windows task bar.




By clicking the icon, you can:


- Open the WD SmartWare software
- Check the drive status and temperature
- Monitor icon alerts
- Safely disconnect the drive

The following sections describe how to use the icon and other ways to do these things, as well as how to unlock the drive using the virtual CD on the desktop.

## Opening the WD SmartWare Software

If the WD SmartWare software does not start automatically, you can restart it by:

- Clicking **Start > (All) Programs > WD SmartWare > WD SmartWare.**
- Double-clicking the WD SmartWare icon  in the task bar.

*Note:* You can also left- or right-click the WD SmartWare icon  in the task bar and select **WD SmartWare.**

The WD SmartWare Home screen displays, see:


- Figure 7 on page 12
- Figure 16 on page 56

In the Content Gauge for your computer's hard drive, all of your files that are available for backup are shown against a blue background in six categories where:

This file category	Includes files with these extensions
<b>Documents</b>	.doc, .txt, .htm, .html, .ppt, .xls, .xml, and other document extensions
<b>Mail</b>	.mail, .msg, .pst., and other mail extensions
<b>Music</b>	.mp3, .wav, .wma, and other music extensions
<b>Movies</b>	.avi, .mov, .mp4, and other movie extensions
<b>Pictures</b>	.gif, .jpg, .png, and other picture extensions
<b>Other</b>	Others that do not belong in the five main categories


For a complete list of all included file extensions, search for Answer ID 3644 in the WD Knowledge Base at <http://support.wdc.com>.

## Checking Drive Status and Temperature

Hover the pointer over the WD SmartWare icon  to see the drive capacity used and drive temperature, and to find out if the drive is locked:

WD Drive Status			
Drive Name [Volumes]	Used	Locked	Temperature
● My Book Studio USB HDD [F:]	2%	No	OK


## Monitoring Icon Alerts

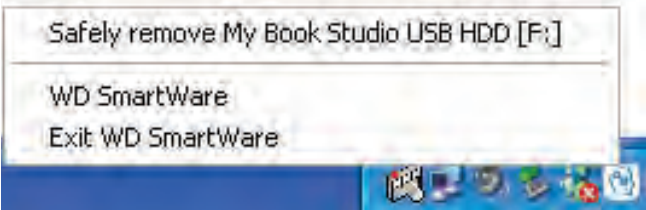
The WD SmartWare icon in the system tray  flashes green and white to indicate drive status as follows:

IF the WD SmartWare icon flashes . . .	THEN the drive might be . . .
Green and white,	Locked or in a format that the WD SmartWare software does not understand (non-Windows format in a Windows environment).
Red and white,	Overheated. Power down the drive and let it cool for 60 minutes. Power it back on, and if the problem persists, contact WD Support.

## Disconnecting the Drive Safely

**CAUTION!** To prevent data loss, close all active windows and applications before shutting down or disconnecting the drive.

1. Right-click the WD SmartWare icon  in the system tray, and then click **Safely remove My Book Studio USB HDD**. You might hear the drive power down as the Power LED flashes.



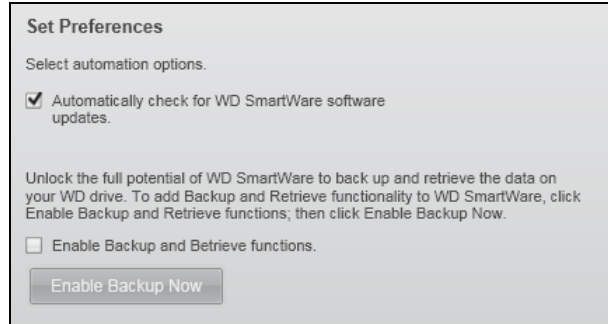
2. Wait for the power/activity LED to turn off before disconnecting the drive from the computer.



## Enabling the Backup and Retrieve Functions

If you selected **Install Drive Settings** at the **What would you like to do?** prompt on the Welcome to WD SmartWare screen and now want to enable the Backup and Retrieve functions:

1. On the drive maintenance Drive Settings screen (see Figure 17 on page 56), click **Preferences** to display the Set Preferences dialog:



2. Select the **Enable Backup and Restore functions** check box.
3. Click **Enable Backup Now** to:
  - Add the **Backup** and **Retrieve** tabs to the Home screen display
  - Add the **Set Up Software** and **Set Up Drive** options to the Settings screen
  - Remove the **Preferences** option from the Drive Settings screen

## Uninstalling the WD SmartWare Software

**Important:** You can easily uninstall the software. However, you will need to restart the backup job manually after reinstalling the software as uninstalling deletes all existing backup job configurations. (See “Backing Up Your Computer Files” on page 18.)

Use your operating system’s Add or Remove Programs function to uninstall the WD SmartWare software from your computer:

### Uninstalling on Windows XP Computers

1. Click **Start > Control Panel**.
2. Double-click **Add or Remove Programs**.
3. Select **WD SmartWare** and click **Remove**.
4. Click **Yes** at the **Are you sure...** prompt.

### Uninstalling on Windows Vista or Windows 7 Computers

1. Click **Start > Control Panel**.
2. Double-click **Programs and Features**.
3. Click **WD SmartWare** or the WD SmartWare icon and click **Uninstall/Change** at the top of the screen.
4. Click **Yes** at the **Do you wish to proceed...** prompt.



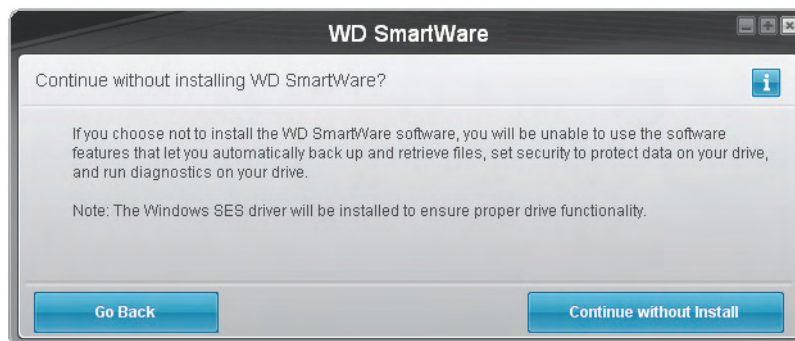
## Getting Started Without the WD SmartWare Software

If you do not install the WD SmartWare software, you can still use your My Book as an external hard drive. In this case, however, you will not be able to:

- Protect your data with automatic continuous backups (see “Backing Up Your Computer Files” on page 18)
- Retrieve earlier versions of lost, or damaged files (see “Retrieving Backed Up Files” on page 26)
- Secure your drive and all of the files on it with a password (see “Locking and Unlocking Your Drive” on page 30)
- Customize your software and drive settings for the best possible performance (see “Managing and Customizing Your Drive” on page 34)
- Check the operational condition of your drive with built-in diagnostic features (see “Checking Drive Health” on page 47)

To forego these performance features and get started without installing the WD SmartWare software:

1. Click **Do Not Install** at the **What would you like to do?** prompt on the Welcome to WD SmartWare screen to display the **Continue without installing WD SmartWare?** prompt:



2. Click:
  - **Continue without Install** if you still do not want to install the WD SmartWare software.
  - **Go Back** if you have changed your mind and *do* want to install the WD SmartWare software. In this case, go to “Getting Started with the WD SmartWare Software on Windows” on page 54.

## 9

## Troubleshooting

This chapter includes the following topics:

[Installing, Partitioning, and Formatting the Drive](#)  
[Frequently Asked Questions](#)

If you have problems when installing or using this product, refer to this troubleshooting section or visit our support website at [support.wdc.com](http://support.wdc.com) and search our knowledge base for more help.

### Installing, Partitioning, and Formatting the Drive

How to	Answer ID
■ Install, partition, and format the drive in Windows XP and Vista	207, 3322
■ Install, partition, and format the drive to Mac OS X 10.4.11 and 10.5+	287, 3323
■ Reformat from Mac GPT to Windows XP NTFS	3645
■ Reformat the drive from Mac GPT to Windows Vista NTFS format	3647
■ Obtain and reinstall the original software included with this product	1425
■ Format the drive to the FAT32 file system*	1364
■ Use the drive on a Mac and a PC simultaneously	291

*\*The FAT32 file system has a maximum individual file size of 4 GB and cannot create partitions larger than 32 GB in Windows; however, Windows users can overcome these file size limitations by formatting the drive to NTFS using the Disk Management utility. See answer ID 1287 at [support.wdc.com](http://support.wdc.com) and article IDs 314463 and 184006 at [support.microsoft.com](http://support.microsoft.com) for further details. To create partitions larger than 32 GB in FAT32 when reformatting the drive, download the External USB/FireWire FAT32 Formatting Utility from [support.wdc.com/download](http://support.wdc.com/download).*

### Frequently Asked Questions

**Q:** *How do I determine whether or not my system supports USB 2.0?*

**A:** Refer to your USB card documentation or contact your USB card manufacturer.

*Note:* If your USB 2.0 controller is built into the system motherboard, be sure to install the appropriate chipset support for your motherboard. Refer to your motherboard or system manual for more information.

**Q:** *What happens when a USB 2.0 device is plugged into a USB 1.1 port or hub?*

**A:** USB 2.0 is backward compatible with USB 1.1. When connected to a USB 1.1 port or hub, a USB 2.0 device operates at the USB 1.1 full speed of up to 12 Mbps.

**Q:** *Why is the data transfer rate slow?*

**A:** Your system may be operating at USB 1.1 speeds due to an incorrect driver installation of the USB 2.0 adapter card or a system that does not support USB 2.0.

If your system includes a PCI slot, you can achieve Hi-Speed USB transfer rates by installing a USB 2.0 PCI adapter card. Contact the card manufacturer for installation procedures and more information.

*Note:* If an additional external drive is connected to the WD product, USB bandwidth is shared and may affect performance.

**Q:** *Why does the drive not power up?*

**A:** Be sure the drive is plugged in to a power source. A special cable may be needed for computers with limited bus power. For more information in the U.S., visit our Web site at [store.westerndigital.com](http://store.westerndigital.com). Outside the U.S., contact WD Technical Support in your region.

**Q:** *Why is the drive not recognized under My Computer or on the computer desktop?*

**A:** If your system has a USB 2.0 PCI adapter card, be sure that its drivers are installed before connecting your WD USB 2.0 external storage product. The drive is not recognized correctly unless USB 2.0 root hub and host controller drivers are installed. Contact the adapter card manufacturer for installation procedures.

**Q:** *Why won't my computer boot when I connect my USB drive to the computer before booting?*

**A:** Depending on your system configuration, your computer may attempt to boot from your WD portable USB drive. Refer to your system's motherboard BIOS setting documentation to disable this feature or visit [support.wdc.com](http://support.wdc.com) and see Knowledge Base answer ID 1201. For more information about booting from external drives, refer to your system documentation or contact your system manufacturer.

## A

## Installing an SES Driver

If you do not install the WD SmartWare software, you must have an SES driver installed on computers running Windows to keep the hardware popup wizard from displaying every time you connect your My Book drive to your computer.

*Note:* The SES Driver is installed automatically when you install the WD SmartWare software or if you clicked **Do Not Install** on the Welcome to WD SmartWare screen (see “Getting Started Without the WD SmartWare Software” on page 60).

The following topics are included in this appendix:

[Installing on Windows XP Computers](#)  
[Installing on Windows Vista Computers](#)  
[Installing on Windows 7 Computers](#)

### Installing on Windows XP Computers

After you physically connect the drive as shown in Figure 4 on page 8, the Found New Hardware Wizard screen displays.

*Note:* If Autoplay is enabled, two additional screens might appear at the same time as the Found New Hardware Wizard screen. If they appear, close them.

You can use the Found New Hardware Wizard to install the SES driver either:

- Automatically, if your computer is connected to the Internet
- Manually, whether your computer is connected to the Internet or not

### Installing the Driver Automatically

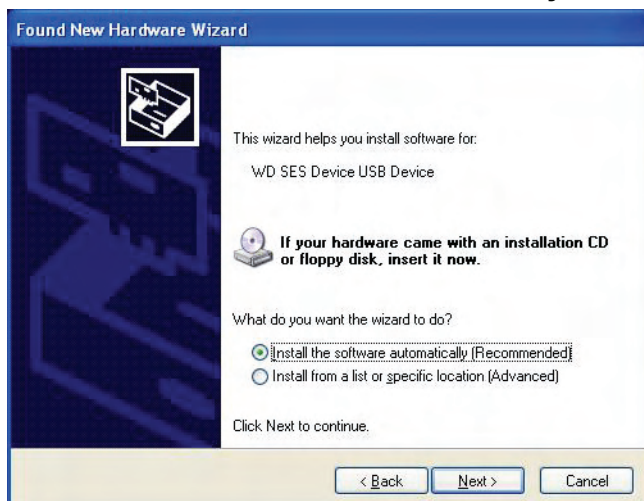
To install the SES driver automatically, your computer must be connected to the Internet:

1. Verify that your computer is connected to the Internet.
2. On the Found New Hardware Wizard screen, select **Yes this time only** to allow Windows XP to connect to Windows Update:



3. Click **Next** to continue.

4. Select **Install the software automatically** and click **Next**:



5. When the installation completes, click **Finish**:



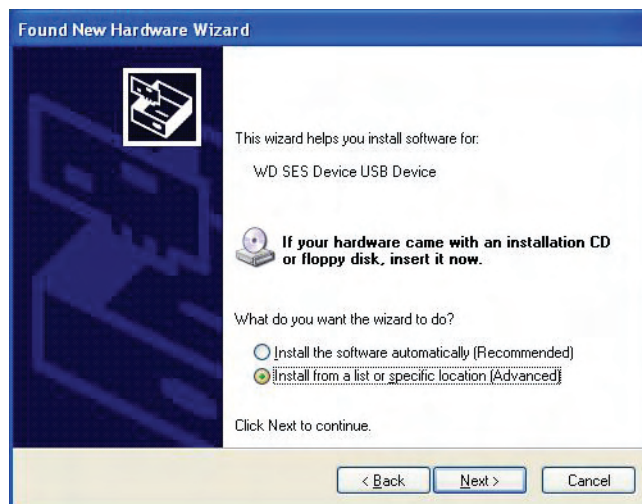
## Installing the Driver Manually

If your computer is not connected to the Internet, install the driver manually:

1. On the Found New Hardware Wizard screen, select **No, not this time** to inhibit a connection attempt to Windows Update:



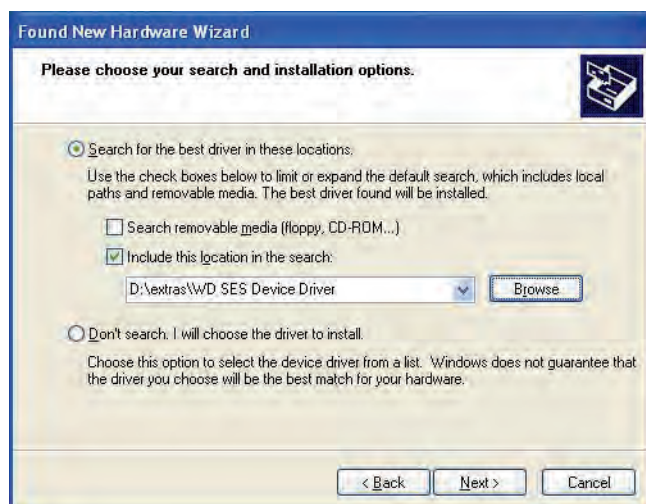
2. Click **Next** to continue.
3. Select **Install from a list or specific location** and click **Next**:



4. Browse to **My Computer** and:
  - a. Double-click the WD SmartWare VCD drive.
  - b. Double-click the extras folder.
  - c. Select **WD SES Device Driver**.



d. Click **Next**:



5. When the installation completes, click **Finish**:





## Installing on Windows Vista Computers

After you physically connect the drive as shown in Figure 4 on page 8, the Found New Hardware screen displays.

*Note:* If Autoplay is enabled, two additional screens might appear at the same time as the Found New Hardware screen. If they appear, close them.

You can use the Found New Hardware screen to install the SES driver either:

- Automatically, if your computer is connected to the Internet
- Manually, whether your computer is connected to the Internet or not

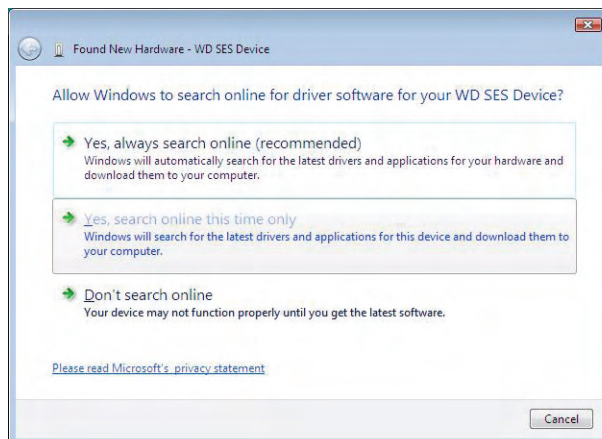
### Installing the Driver Automatically

To install the SES driver automatically, your computer must be connected to the Internet:

1. Verify that your computer is connected to the Internet.
2. On the Found New Hardware wizard screen, click **Locate and install driver software**:



3. On the Found New Hardware - WD SES Device wizard screen, click **Yes, search online this time only** to allow Windows Vista to connect to Windows Update:



Windows Vista automatically:

- Connects to Windows Update
- Finds, downloads, and installs the SES driver

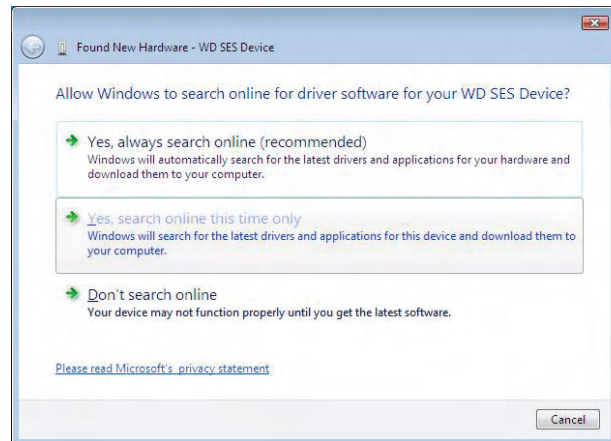
## Installing the Driver Manually

If your computer is not connected to the Internet, install the driver manually:

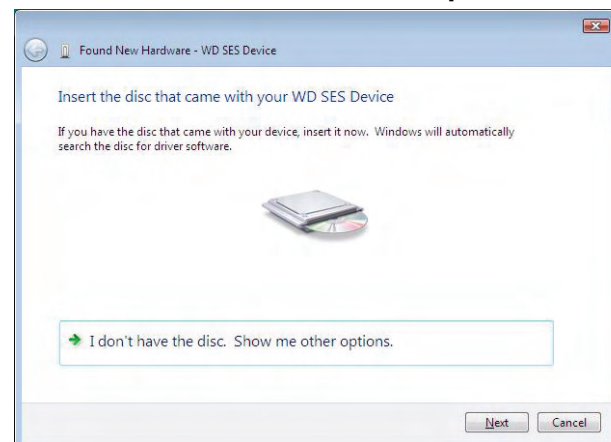
1. On the Found New Hardware wizard screen, click **Locate and install driver software**:



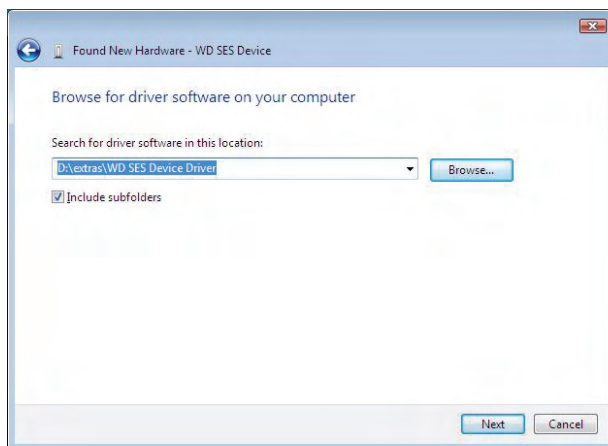
2. On the Found New Hardware - WD SES Device wizard screen, click **Don't search online**:



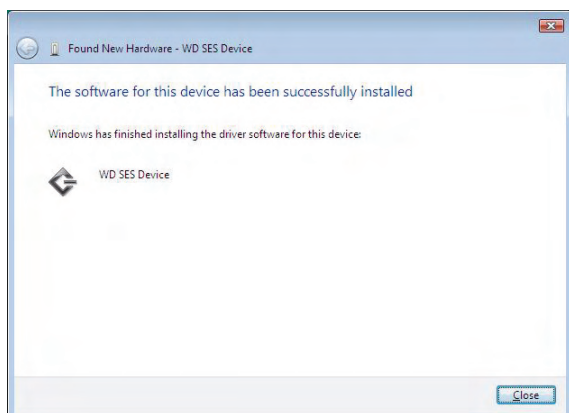
3. At the **Install the disc that came with your WD SES Device** prompt, click **I don't have the disc. Show me other options**:



4. Browse to **Computer** and:
  - a. Double-click the WD SmartWare VCD drive.
  - b. Double-click the extras folder.
  - c. Select **WD SES Device Driver**.
  - d. Click **Next**:



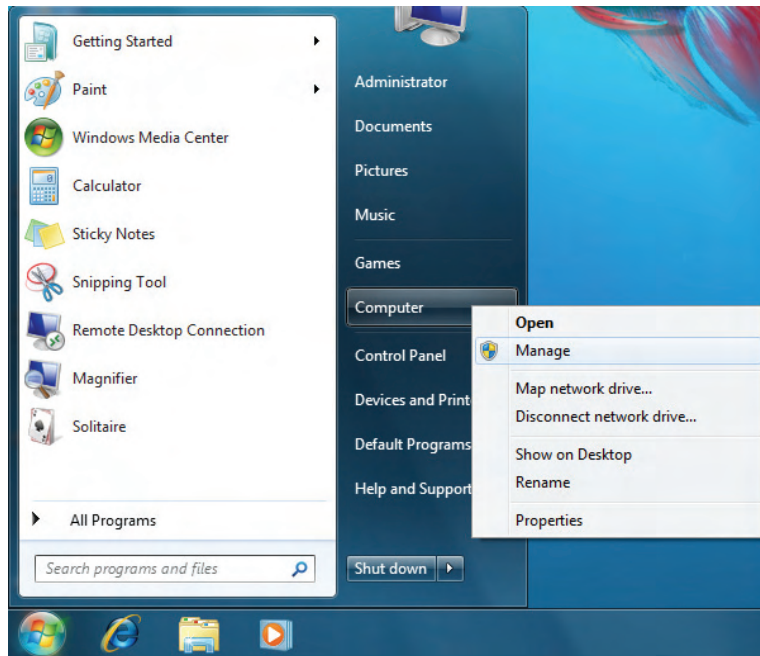
5. When the installation completes, click **Close**:



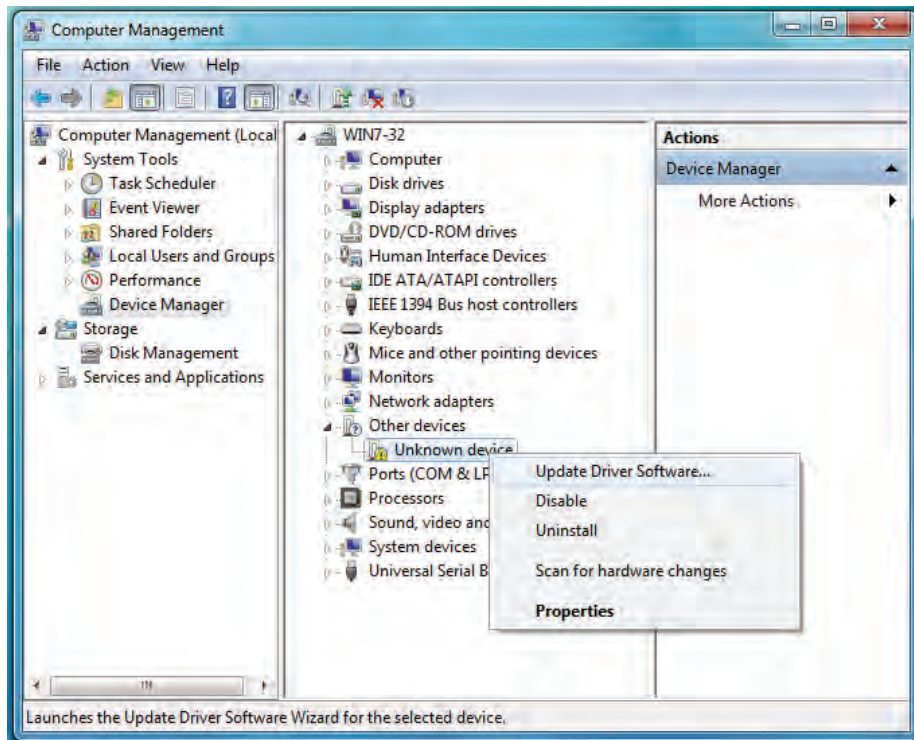
## Installing on Windows 7 Computers

After you physically connect the drive as shown in Figure 4 on page 8, use the Windows 7 Computer Management utility to install the SES driver:

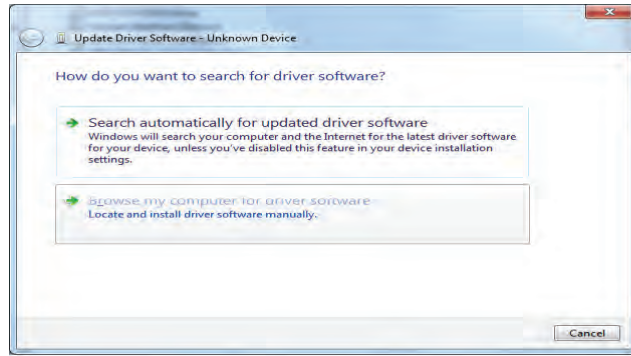
1. Open **All Programs** and click **Computer > Manage**:



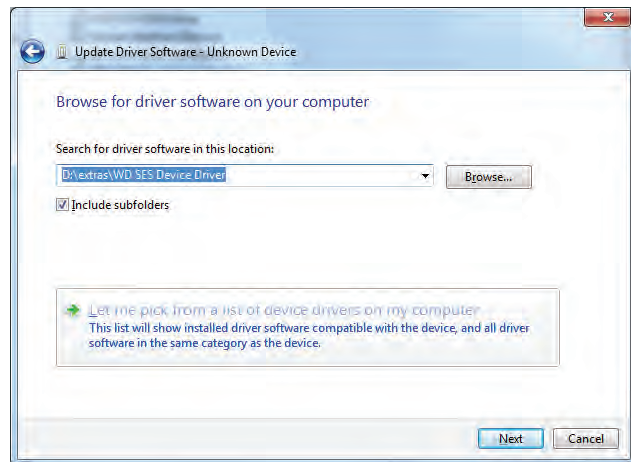
2. Under **Computer Management (Local)**, click **Device Manager > Unknown Device** and right-click **Update driver software**:



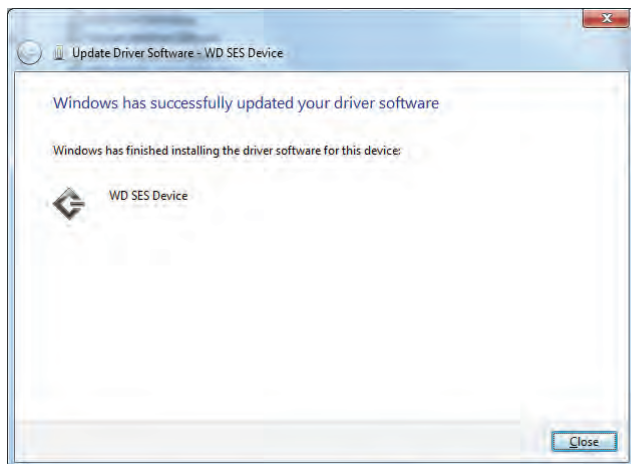
3. Click **Browse my computer for driver software**.



4. Browse to **Computer**, double-click the WD SmartWare VCD drive, double-click the extras folder, and select **WD SES Device Driver**:



5. Click **Next**.
6. When the installation completes, click **Close**:





**B**

## Compliance and Warranty Information

This appendix includes the following topics:

[Regulatory Compliance](#)  
[Environmental Compliance \(China\)](#)  
[Warranty Information](#)

### Regulatory Compliance

#### FCC Class B Information

This device has been tested and found to comply with the limits of a Class B digital device, pursuant to Part 15 of the FCC Rules. These limits are designed to provide reasonable protection against harmful interference in a residential installation. This unit generates, uses, and can radiate radio frequency energy and, if not installed and used in accordance with the instructions, may cause harmful interference to radio or television reception. However, there is no guarantee that interference will not occur in a particular installation. Any changes or modifications not expressly approved by WD could void the user's authority to operate this equipment.

#### ICES/NMB-003 Compliance

Cet appareil de la classe B est conforme à la norme NMB-003 du Canada.

This device complies with Canadian ICES-003 Class B.

#### Safety Compliance

Approved for US and Canada. CAN/CSA-C22.2 No. 60950-1, UL 60950-1: Safety of Information Technology Equipment.

Approuvé pour les Etats-Unis et le Canada. CAN/CSA-C22.2 No. 60950-1: Sûreté d'équipement de technologie de l'information.

This product is intended to be supplied by a listed limited power source, double insulated, or direct plug-in power unit marked "Class 2."

#### CE Compliance For Europe

Marking by the CE symbol indicates compliance of this system to the applicable Council Directives of the European Union, including the EMC Directive (2004/108/EC) and the Low Voltage Directive (2006/95/EC). A "Declaration of Conformity" in accordance with the applicable directives has been made and is on file at Western Digital Europe.

#### GS Mark (Germany only)

Machine noise - regulation 3. GPSGV: Unless declared otherwise, the highest level of sound pressure from this product is 70db(A) or less, per EN ISO 7779.

Maschinenlärminformations-Verordnung 3. GPSGV: Der höchste Schalldruckpegel beträgt 70 db(A) oder weniger gemäß EN ISO 7779, falls nicht anders gekennzeichnet oder spezifiziert.

## KCC Notice (Republic of Korea only)

기종별§	사용자 안내문§
B급 기기 (가정용 정보통신기기)§	이 기기는 가정용으로 전자파 적합 인증을 한 기기로서 주거지역에서는 물론 모든 지역에서 사용할 수 있습니다.§

Class B Device 1 Please note that this device has been approved for non-business purposes and may be used in any environment, including residential areas.

## Environmental Compliance (China)

部件名称	有毒有害物质和元素					
	铅 (Pb)	镉 (Cd)	汞 (Hg)	六价铬 (Cr <sup>6+</sup> )	多溴联苯 (PBB)	多溴二苯醚 (PBDE)
包装页	○	○	○	○	○	○
包装外壳	○	○	○	○	○	○
光导管	○	○	○	○	○	○
电源按钮	○	○	○	○	○	○
HDD 托架	○	○	○	○	○	○
EMI 外壳	○	○	○	○	○	○
个性化板材	○	○	○	○	○	○
Kensington 锁按键	○	○	○	○	○	○
螺丝 6-32x6.35mm	○	○	○	○	○	○
螺丝 M3x5mm+5W	○	○	○	○	○	○
垂直支脚	○	○	○	○	○	○
减震架	○	○	○	○	○	○
印制板装配 (PCA)*	○	○	○	○	○	○
硬盘	X	○	○	○	○	○
电缆组件	○	○	○	○	○	○
电源适配器	○	○	○	○	○	○
电源线	○	○	○	○	○	○

\* 印制板装配包括所有印刷电路板 (PCB) 及其相应的各个组件、IC 及连接器。

○：表示此部件所用的所有均质材料中包含的此有毒或有害物低于 MCV 标准中的限制要求。

X：表示此部件所用的均质材料中至少有一种材料包含的此有毒或有害物高于 MCV 标准中的限制要求。

在出现一个“X”的所有情况下，WD 采用容许的排除。



## Warranty Information

### Obtaining Service

WD values your business and always attempts to provide you the very best of service. If this Product requires maintenance, either contact the dealer from whom you originally purchased the Product or visit our product support website at [support.wdc.com](http://support.wdc.com) for information on how to obtain service or a Return Material Authorization (RMA). If it is determined that the Product may be defective, you will be given an RMA number and instructions for Product return. An unauthorized return (i.e., one for which an RMA number has not been issued) will be returned to you at your expense. Authorized returns must be shipped in an approved shipping container, prepaid and insured, to the address provided on your return paperwork. Your original box and packaging materials should be kept for storing or shipping your WD product. To conclusively establish the period of warranty, check the warranty expiration (serial number required) via [support.wdc.com](http://support.wdc.com). WD shall have no liability for lost data regardless of the cause, recovery of lost data, or data contained in any Product placed in its possession.

### Limited Warranty

WD warrants that the Product, in the course of its normal use, will for the term defined below, be free from defects in material and workmanship and will conform to WD's specification therefor. The term of your limited warranty depends on the country in which your Product was purchased. The term of your limited warranty is for 3 years in the North, South and Central America region, 3 years in the Europe, the Middle East and Africa region, and 3 years in the Asia Pacific region, unless otherwise required by law. The term of your limited warranty period shall commence on the purchase date appearing on your purchase receipt. WD shall have no liability for any Product returned if WD determines that the Product was stolen from WD or that the asserted defect a) is not present, b) cannot reasonably be rectified because of damage occurring before WD receives the Product, or c) is attributable to misuse, improper installation, alteration (including removing or obliterating labels and opening or removing external enclosures, unless the product is on the list of limited user-serviceable products and the specific alteration is within the scope of the applicable instructions, as found at [support.wdc.com](http://support.wdc.com)), accident or mishandling while in the possession of someone other than WD. Subject to the limitations specified above, your sole and exclusive warranty shall be, during the period of warranty specified above and at WD's option, the repair or replacement of the Product.

The foregoing limited warranty is WD's sole warranty and is applicable only to products sold as new. The remedies provided herein are in lieu of a) any and all other remedies and warranties, whether expressed, implied or statutory, including but not limited to, any implied warranty of merchantability or fitness for a particular purpose, and b) any and all obligations and liabilities of WD for damages including, but not limited to accidental, consequential, or special damages, or any financial loss, lost profits or expenses, or lost data arising out of or in connection with the purchase, use, or performance of the Product, even if WD has been advised of the possibility of such damages. In the United States, some states do not allow exclusion or limitations of incidental or consequential damages, so the limitations above may not apply to you. This warranty gives you specific legal rights, and you may also have other rights which vary from state to state.

# Index

## A

Accessories, optional 3

## B

Backup

- about backing up files 18
- files content box 21, 22
- procedure 20, 21

Box contents 2

## C

CAUTION

- about erasing the drive 44
- about lost passwords 30
- about preventing data loss when disconnecting 36, 58
- about your unlocked drive 31

China RoHS 73

Compatibility with operating systems 3

Compliance, regulatory 72

Connecting the drive 7

Converting drive format 61

Creating a password 30

Customizing 39

## D

Disconnecting 58

Dismounting

- virtual CD 36

Displaying 37

Documents file category 57

Drive

- connecting 7
- diagnostics and status checks 47
- dismounting 36
- eraser, setting 42
- handling precautions 6
- label 42
- sleep timer 44

Drive Settings

- drive eraser 42, 44
- file history 40
- label 42
- registration 42, 43
- security 30, 42
- sleep timer 44

## E

Environmental compliance, China 73

Erase Drive screen 44, 45, 59

Erasing the drive 44

- CAUTION about erasing the drive 44

## F

FAQs 61

File

- categories, defined 57
- history, drive setting 40
- history, screen 24

Formats 3

Front and back views 3

Full Media Scan 47

## H

Handling precautions 6

Hardware 2

## I

In 57

Indicators 4

## K

Kensington security slot 6

## L

Label, specifying 42

LEDs

- lock indicator 5
- power/activity 5

limited warranty 74

## M

Mail file category, defined 57

Movies file category, defined 57

Music file category, defined 57

## O

obtaining service 74

Online Help 14

Operating system compatibility 3

Other file category, defined 57

## P

Password protecting your drive 30

- CAUTION about lost passwords 30

Physical description 3

Pictures file category, defined 57

Power button 5, 37

Precautions for handling the drive 6

Preferences options, setting 41

Preferences software setting 40

Product features 1

Product registration 6

## Q

Quick Diagnostic Self-test 47

## R

Reformatting the drive 49, 61

Register Drive screen 43  
Registering your drive 43  
Registration drive setting 42  
Registration, online 6  
Regulatory compliance 72  
Remove drive 36  
Retrieve  
    about retrieving files 26  
    folder, software setting 40  
    folder, specifying 40  
    procedure 26, 29  
RoHS 73  
Run Diagnostics screen 47

**S**

Security drive settings 42  
Serial number 37  
Set  
    preferences screen 41  
    retrieve folder screen 40  
    sleep timer screen 44  
Setting the drive sleep timer 44  
SMART Status Check 47  
Software Settings  
    preferences 40, 41  
    retrieve folder 40  
    system throttling 40  
Space available 37  
Settings  
    See Drive Settings  
Status check 37  
System  
    compatibility 3  
    file category defined 13  
    file category, defined 20  
    throttling software setting 40

**T**

Temperature check 37

**U**

Unlocking the drive from the virtual CD 32  
Unlocking the drive manually  
    from sleep mode 39  
    when SmartWare software is not available 38  
USB drive interface 5

**V**

Virtual CD  
    definition 7  
    dismounting 36  
    icon, showing and hiding 42, 45  
    unlocking drive from 32

**W**

warranty 74  
WD service 74  
WD SmartWare icon  
    Windows 34  
WD SmartWare software 7  
Windows  
    disconnecting the drive safely 58  
    flashing icon alerts 58  
    restarting WD SmartWare software 57  
    status check 57  
    temperature check 57  
    uninstalling WD SmartWare software 59  
    WD SmartWare icon 57  
Windows Vista/Windows 7  
    installing drive on 52  
Windows XP  
    installing drive on 50

---

Information furnished by WD is believed to be accurate and reliable; however, no responsibility is assumed by WD for its use nor for any infringement of patents or other rights of third parties which may result from its use. No license is granted by implication or otherwise under any patent or patent rights of WD. WD reserves the right to change specifications at any time without notice.

Western Digital, WD, the WD logo, and My Book are registered trademarks and My Book Studio, WD SmartWare, and Data Lifeguard are trademarks of Western Digital Technologies, Inc. Other marks may be mentioned herein that belong to other companies.

© 2010 Western Digital Technologies, Inc. All rights reserved.

Western Digital  
20511 Lake Forest Drive  
Lake Forest, California 92630 U.S.A.

4779-705038-A02 Apr 2010