

Technical Support Services

If you need additional information or help during installation or normal use of our products, contact Western Digital Technical Support. Please have your FireWire PCI Adapter serial number available.

Online Services

Email: customer.service@wdc.com

Internet: support.wdc.com

Product Registration: www.wdc.com/products/registration

Telephone Assistance

800.ASK.4WDC (800.275.4932)

+31.20.446.7651 (Europe)

Western Digital and the Western Digital logo are registered trademarks of Western Digital Technologies, Inc. Other marks that may be mentioned herein belong to other companies.

© 2002 by Western Digital Technologies, Inc. All rights reserved. Assembled in the USA.

Western Digital FireWire® PCI Adapter

Quick Install

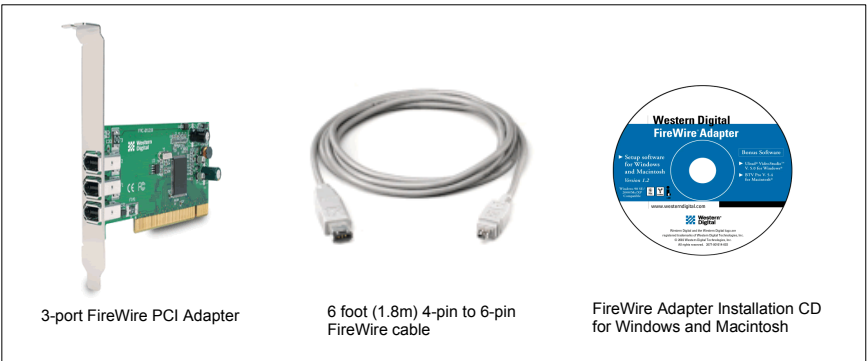
Hardware Installation and Software Setup for your Western Digital FireWire PCI Adapter

To download the full installation guide, go to www.wdc.com/library and click on the Current FireWire Drives and Adapters link. Pour télécharger le guide complet d'installation, allez à l'adresse www.wdc.com/library et cliquez sur le link Current FireWire Drives and Adapters. Eine ausführliche Installationsanleitung können Sie im Internet unter www.wdc.com/library herunterladen, indem Sie dort auf den Link Current FireWire Drives and Adapters klicken.

Before Getting Started:

- Make sure you have an open PCI card slot, at least 64 MB of RAM, and a CD-ROM drive on your computer. You must have Mac OS 8.6 or Windows 98 SE (Second Edition) or higher installed on your system. Your computer must be a FireWire-enabled Macintosh or a PC with a minimum 200 MHz processor.
- Write down your Western Digital serial number for technical support purposes. The serial number is located on the white label on the back of the adapter.
- Gather together your computer system manuals and a small Phillips and flat-blade screwdriver along with the supplied items.

Western Digital FireWire PCI Adapter Kit Contents



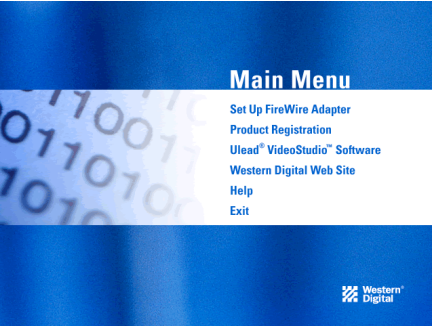
Also included: warranty card, Quick Install guide

PCI Adapter Setup for Windows®

Note: The proper device drivers must be loaded on your system before installing your Western Digital FireWire PCI Adapter. By doing so, your adapter will properly display its information under the Windows Device Manager. Follow the steps in “Windows Installation” below *before* installing the FireWire PCI Adapter.

Windows Installation

1. Insert the Western Digital FireWire Adapter Installation CD into your CD-ROM drive. The program will start automatically.
2. The main menu displays, showing the following options:



Click on **Set Up FireWire Adapter**.

3. The **Western Digital FireWire Adapter Setup** welcome screen appears. Click **Next**.
4. In the **Driver Update** dialog box, click **Next** to continue. This will prepare your system for FireWire support.
5. Next, you will be prompted to register your FireWire PCI Adapter online at Western Digital’s Web site. You must register the FireWire PCI Adapter to receive 90 days of free Western Digital technical support. After entering your product information in each field, click **Submit** and close the browser to complete registration.
6. Click **Next** again to verify you have the latest FireWire drivers from Microsoft®.
7. Follow the instructions for your version of Windows:
 - a. *Windows Me/2000/XP:* Your version of Windows already has the required FireWire driver support.
 - 1) Click **Next**.
 - 2) When the Congratulations dialog box appears, click **Finish**. You must restart your computer for the new settings to take effect.
 - 3) When you have finished installing all software, click **Exit** in the Main Menu and click **Close**.

For service and literature:

800.ASK.4WDC USA
 +31.20.4467651 Europe
www.westerndigital.com

2079-001011-003
 05/02

Western Digital
20511 Lake Forest Drive
Lake Forest, CA 92630



PCI Adapter Setup for Windows (continued)

- b. *Windows 98 SE*: Your Western Digital FireWire PCI Adapter software is ready to finalize your setup.
 - 1) Click **Finish** when you see the Congratulations screen.
 - 2) The Windows 98 SE Update dialog box displays. Click **Yes** to continue.
 - 3) The Microsoft license agreement for the Windows 98 SE Update displays.
 - 4) Click **Yes** to continue.
 - 5) When prompted to restart, click **Yes**.
- c. *Windows 98 and earlier*: Your version of Windows does not support FireWire Plug and Play devices.
 - 1) Click **Exit**.
 - 2) Upgrade to Windows 98 SE or higher, and reinstall your FireWire PCI Adapter.

Ulead® VideoStudio™ Software Installation for PC

1. Insert the Western Digital FireWire PCI Adapter Installation CD into your CD-ROM drive. The program will start automatically.
2. Click on the **Ulead VideoStudio** button on the main menu.
3. Follow the on-screen directions to complete software installation.

Recommended System Requirements for Digital Video Editing

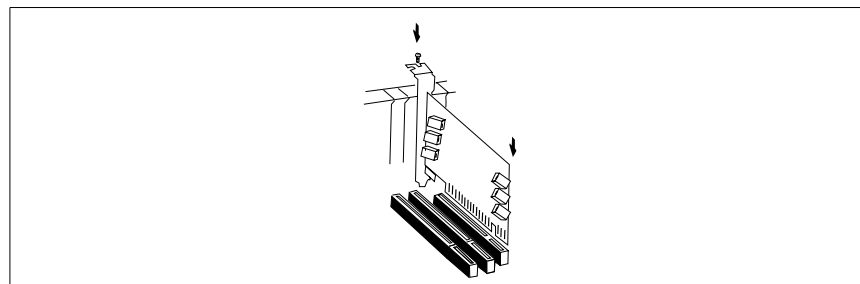
PC Users

- Intel® Pentium® III 450 Mhz or higher (700 Mhz or higher recommended)
- 128 MB RAM
- 500 MB of available hard drive space for program files
- 4 GB+ hard drive space for video capture and editing
- Windows compatible display with at least 800x600 resolution

Hardware Installation—Windows and Macintosh

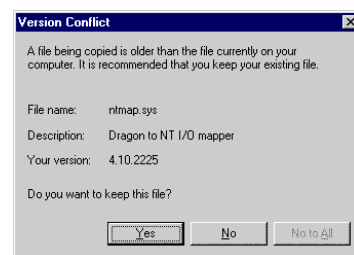
Note: Windows users must install the Western Digital FireWire Adapter software *before* installing the WD FireWire PCI adapter (see note on page 2).

1. With your computer shut down and unplugged from its power source, remove the computer's outside cover.
2. Install the adapter in an open PCI slot in your computer by carefully pushing the adapter into the PCI slot, holding the card by the external edges only (see illustration below).



FireWire PCI Adapter Installation

3. *Windows 98 SE*: Close your computer and restart. After your computer has finished rebooting, you will see a series of five **Version Conflict** dialog boxes, each informing you that the file being copied is older than the file currently on your computer.



Click **Yes** in each dialog box to keep your existing file (clicking **No** will prevent the drivers from loading properly). These dialog boxes will only display the first time you install your FireWire PCI Adapter.

Windows Me/2000/XP: Windows Me/2000/XP automatically detects and configures your FireWire PCI Adapter. Close your computer and restart.

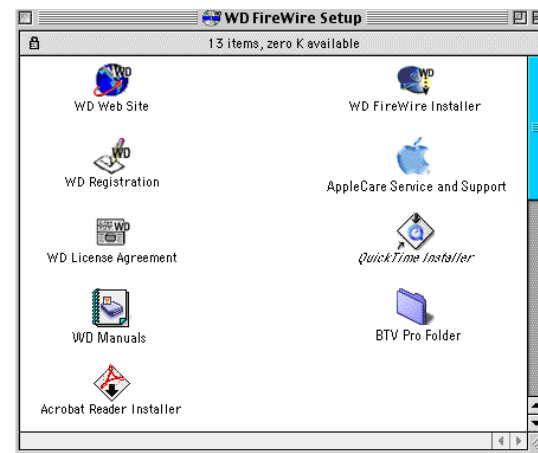
Macintosh: Close your computer, restart, and follow the setup instructions for “PCI Adapter Setup for Macintosh” on page 5.

PCI Adapter Setup for Macintosh

Be sure to install the FireWire PCI adapter *before* installing FireWire software. See “Hardware Installation—Windows and Macintosh” on page 4 for details.

Macintosh Installation

1. Insert the Western Digital FireWire Adapter Installation CD. The following window displays:



2. Double-click on the **WD FireWire Installer** icon.
3. The Welcome screen displays. Click **Continue**.
4. The FireWire license agreement displays. Click **Accept**.
5. The **WD FireWire Installer** dialog displays. Click **Install**.



6. Click **Restart** to complete installation.
7. After restart, you will be prompted to register your FireWire PCI Adapter online at Western Digital's Web site. You must register the product to receive 90 days of free Western Digital technical support. After entering your product information in each field, click **Submit** and close the browser to complete registration.

BTV Pro Software Installation for Macintosh

1. Insert the Western Digital FireWire Adapter Installation CD into your CD-ROM drive. The program will start automatically.
2. Double-click on the **WD FireWire Setup** icon on your desktop.
3. Double-click on the **BTV Pro** folder located in the WD FireWire Setup window.
4. Double-click on the **BTV Pro** icon to begin installation.
5. Follow the on-screen instructions to complete software installation.

Recommended System Requirements for Digital Video Editing

Macintosh Users

- 1.5 MB available hard drive space for program files
- Minimum 12 MB *available* RAM
- 4 GB+ hard drive space for video capture and editing
- Macintosh compatible video input software